

For Research Use Only

LAP3 Monoclonal antibody

Catalog Number: 66417-1-Ig



Basic Information

Catalog Number: 66417-1-Ig	GenBank Accession Number: BC065564	Purification Method: Protein G purification
Size: 150ul, Concentration: 1000 ug/ml by Nanodrop and 1000 ug/ml by Bradford method using BSA as the standard;	GeneID (NCBI): 51056	CloneNo.: 1B11B8
Source: Mouse	UNIPROT ID: P28838	Recommended Dilutions: WB 1:1000-1:6000 IHC 1:100-1:400 IF/ICC 1:200-1:800
Isotype: IgG1	Full Name: leucine aminopeptidase 3	
Immunogen Catalog Number: AG6300	Calculated MW: 56 kDa	
	Observed MW: 56 kDa	

Applications

Tested Applications:
WB, IHC, IF/ICC, ELISA

Species Specificity:
human, mouse, rat, pig

Note-IHC: suggested antigen retrieval with TE buffer pH 9.0; (*) Alternatively, antigen retrieval may be performed with citrate buffer pH 6.0

Positive Controls:

WB : NIH/3T3 cells, C2C12 cell, HeLa cells, HepG2 cells

IHC : human lung tissue,

IF/ICC : HeLa cells,

Background Information

LAP3 (Leucine aminopeptidase 3) is also named as LAPEP, PEPS (peptidase S) and belongs to the peptidase M17 family. It can catalyze the removal of unsubstituted N-terminal amino-acids from various peptides and be presumably involved in the processing and regular turnover of intracellular proteins. PEPS is found in a wide variety of tissues and cultured cells but not in red cells and skin. The enzyme can utilize several di-, tri-, and tetrapeptides as substrates and is the slowest migrating of the peptidases after electrophoresis. (PMID:689684). LAP3 has two isoforms with MW of 52 and 56 kDa.

Storage

Storage:

Store at -20°C. Stable for one year after shipment.

Storage Buffer:

PBS with 0.02% sodium azide and 50% glycerol pH 7.3.

Aliquoting is unnecessary for -20°C storage

***** 20ul sizes contain 0.1% BSA**

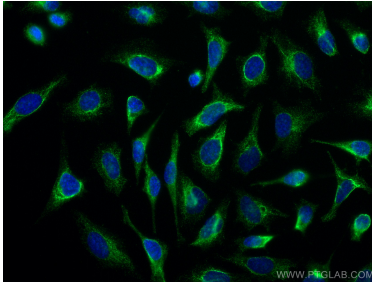
For technical support and original validation data for this product please contact:

T: 1 (888) 4PTGLAB (1-888-478-4522) (toll free in USA), or 1(312) 455-8498 (outside USA)

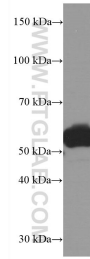
E: proteintech@ptglab.com
W: ptglab.com

This product is exclusively available under Proteintech Group brand and is not available to purchase from any other manufacturer.

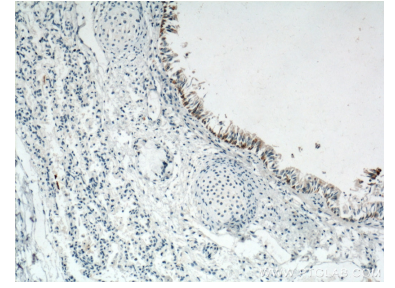
Selected Validation Data



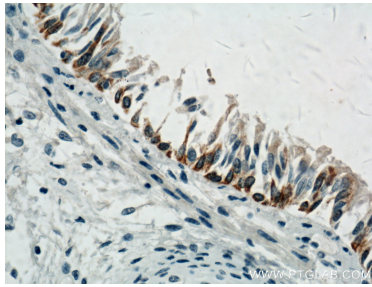
Immunofluorescent analysis of (-20°C Ethanol) fixed HeLa cells using LAP3 antibody (66417-1-Ig, Clone: 1B11B8) at dilution of 1:400 and CoraLite®488-Conjugated AffiniPure Goat Anti-Mouse IgG(H+L).



NIH/3T3 cells were subjected to SDS PAGE followed by western blot with 66417-1-Ig (LAP3 Antibody) at dilution of 1:3000 incubated at room temperature for 1.5 hours.



Immunohistochemical analysis of paraffin-embedded human lung tissue slide using 66417-1-Ig (LAP3 Antibody) at dilution of 1:200 (under 10x lens). Heat mediated antigen retrieval with Tris-EDTA buffer (pH 9.0).



Immunohistochemical analysis of paraffin-embedded human lung tissue slide using 66417-1-Ig (LAP3 Antibody) at dilution of 1:200 (under 40x lens). Heat mediated antigen retrieval with Tris-EDTA buffer (pH 9.0).