

For Research Use Only

# SCP3 Monoclonal antibody

Catalog Number: 66409-1-Ig



## Basic Information

<b>Catalog Number:</b> 66409-1-Ig	<b>GenBank Accession Number:</b> BC062662	<b>Purification Method:</b> Protein A purification
<b>Size:</b> 150ul , Concentration: 1200 µg/ml by Nanodrop and 1000 µg/ml by Bradford method using BSA as the standard;	<b>GeneID (NCBI):</b> 50511	<b>CloneNo.:</b> 1A11F1
<b>Source:</b> Mouse	<b>Full Name:</b> synaptonemal complex protein 3	<b>Recommended Dilutions:</b> WB 1:1000-1:8000
<b>Isotype:</b> IgG1	<b>Calculated MW:</b> 236 aa, 28 kDa	
<b>Immunogen Catalog Number:</b> AG19330	<b>Observed MW:</b> 30 kDa	

## Applications

<b>Tested Applications:</b> WB, ELISA	<b>Positive Controls:</b> WB : human testis tissue, DU 145 cells
<b>Species Specificity:</b> human	

## Background Information

SYCP3 is an essential structural component of the synaptonemal complex. This complex is involved in synapsis, recombination and segregation of meiotic chromosomes. SYCP3 is required for centromere pairing during meiosis in male germ cells. SYCP3 is also required for normal meiosis during spermatogenesis and male fertility. Mutations in SYCP3 are associated with azoospermia in males and susceptibility to pregnancy loss in females.

## Storage

**Storage:**  
Store at -20°C. Stable for one year after shipment.  
**Storage Buffer:**  
PBS with 0.02% sodium azide and 50% glycerol pH 7.3.  
**Aliquoting is unnecessary for -20°C storage**

**\*\*\* 20ul sizes contain 0.1% BSA**

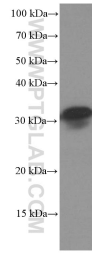
For technical support and original validation data for this product please contact:

T: 1 (888) 4PTGLAB (1-888-478-4522) (toll free  
in USA), or 1(312) 455-8498 (outside USA)

E: [proteintech@ptglab.com](mailto:proteintech@ptglab.com)  
W: [ptglab.com](http://ptglab.com)

**This product is exclusively available under Proteintech Group brand and is not available to purchase from any other manufacturer.**

## Selected Validation Data



human testis tissue were subjected to SDS PAGE followed by western blot with 66409-1-Ig (SYCP3 Antibody) at dilution of 1:4000 incubated at room temperature for 1.5 hours.