

For Research Use Only

# Glutamine Synthetase Monoclonal antibody

Catalog Number: 66323-2-Ig

Featured Product

1 Publications



## Basic Information

<b>Catalog Number:</b> 66323-2-Ig	<b>GenBank Accession Number:</b> BC011700	<b>Purification Method:</b> Protein A purification
<b>Size:</b> 150ul, Concentration: 1300 µg/ml by Nanodrop and 1000 µg/ml by Bradford method using BSA as the standard;	<b>GeneID (NCBI):</b> 2752	<b>CloneNo.:</b> 1B6G4
<b>Source:</b> Mouse	<b>UNIPROT ID:</b> P15104	<b>Recommended Dilutions:</b> WB 1:500-1:2000 IHC 1:2500-1:10000 IF-P 1:200-1:800
<b>Isotype:</b> IgG1	<b>Full Name:</b> glutamate-ammonia ligase (glutamine synthetase)	
<b>Immunogen Catalog Number:</b> AG6309	<b>Calculated MW:</b> 374 aa, 42 kDa	
	<b>Observed MW:</b> 42 kDa	

## Applications

**Tested Applications:**  
WB, IHC, IF-P, FC (Intra), ELISA

**Cited Applications:**  
IF

**Species Specificity:**  
human, mouse, rat

**Cited Species:**  
canine

**Note-IHC: suggested antigen retrieval with TE buffer pH 9.0; (\*) Alternatively, antigen retrieval may be performed with citrate buffer pH 6.0**

**Positive Controls:**

**WB:** Jurkat cells,

**IHC:** human liver cancer tissue, rat liver tissue, mouse liver tissue

**IF-P:** mouse liver tissue, mouse brain tissue

## Notable Publications

Author	Pubmed ID	Journal	Application
Yu Huan	36204864	Neural Regen Res	IF

## Storage

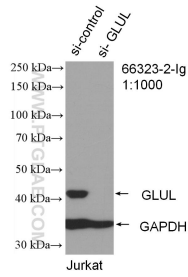
**Storage:**  
Store at -20°C. Stable for one year after shipment.  
**Storage Buffer:**  
PBS with 0.02% sodium azide and 50% glycerol pH 7.3.  
Aliquoting is unnecessary for -20°C storage

\*\*\* 20ul sizes contain 0.1% BSA

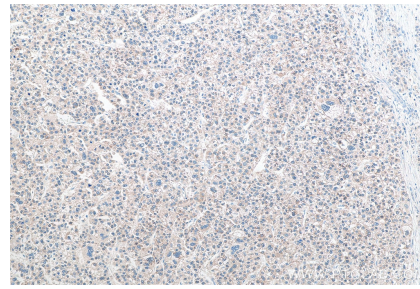
For technical support and original validation data for this product please contact:  
T: 1 (888) 4PTGLAB (1-888-478-4522) (toll free in USA), or 1(312) 455-8498 (outside USA)  
E: proteintech@ptglab.com  
W: ptglab.com

This product is exclusively available under Proteintech Group brand and is not available to purchase from any other manufacturer.

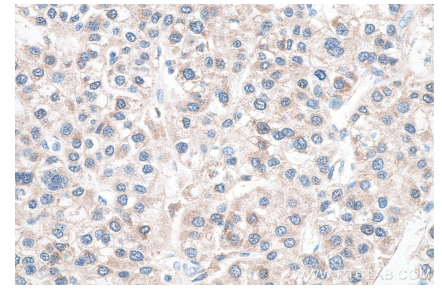
## Selected Validation Data



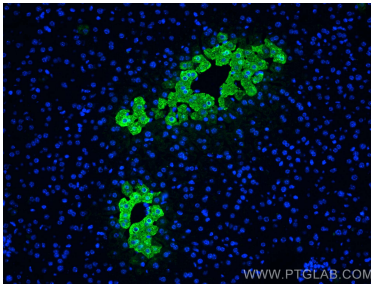
WB result of Glutamine synthetase antibody (66323-2-Ig; 1:1000; incubated at room temperature for 1.5 hours) with sh-Control and sh-Glutamine synthetase transfected Jurkat cells.



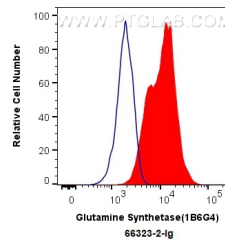
Immunohistochemical analysis of paraffin-embedded human liver cancer tissue slide using 66323-2-Ig (Glutamine Synthetase antibody) at dilution of 1:5000 (under 10x lens). Heat mediated antigen retrieval with Tris-EDTA buffer (pH 9.0).



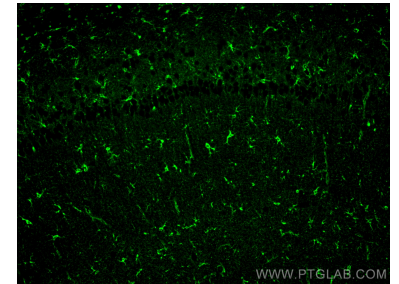
Immunohistochemical analysis of paraffin-embedded human liver cancer tissue slide using 66323-2-Ig (Glutamine Synthetase antibody) at dilution of 1:5000 (under 40x lens). Heat mediated antigen retrieval with Tris-EDTA buffer (pH 9.0).



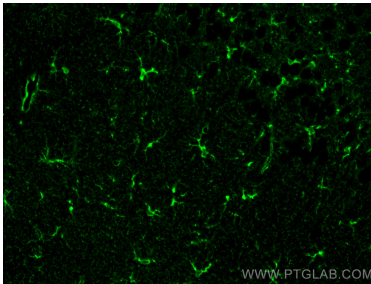
Immunofluorescent analysis of (4% PFA) fixed mouse liver tissue using Glutamine Synthetase antibody (66323-2-Ig, Clone: 1B6G4) at dilution of 1:400 and CoraLite®488-Conjugated AffiniPure Goat Anti-Mouse IgG(H+L).



1X10<sup>6</sup> HepG2 cells were intracellularly stained with 0.4 ug Anti-Human Glutamine Synthetase (66323-2-Ig, Clone:1B6G4) and CoraLite®488-Conjugated AffiniPure Goat Anti-Mouse IgG(H+L) at dilution 1:1000 (red), or 0.4 ug Mouse IgG1 Isotype Control (MOPC-21) (65124-1-Ig, Clone: MOPC-21) (blue). Cells were fixed with 4% PFA and permeabilized with Flow Cytometry Perm Buffer (PF00011-C).



Immunofluorescent analysis of (4% PFA) fixed paraffin-embedded mouse brain tissue using Glutamine Synthetase antibody (66323-2-Ig, Clone: 1B6G4) at dilution of 1:800 and Multi-rAb CoraLite® Plus 488-Goat Anti-Mouse Recombinant Secondary Antibody (H+L) (RGAM002). Heat mediated antigen retrieval with Tris-EDTA buffer (pH 9.0).



Immunofluorescent analysis of (4% PFA) fixed paraffin-embedded mouse brain tissue using Glutamine Synthetase antibody (66323-2-Ig, Clone: 1B6G4) at dilution of 1:800 and Multi-rAb CoraLite® Plus 488-Goat Anti-Mouse Recombinant Secondary Antibody (H+L) (RGAM002). Heat mediated antigen retrieval with Tris-EDTA buffer (pH 9.0).