

For Research Use Only

# Alpha 1B-Glycoprotein Monoclonal antibody

Catalog Number: 66260-1-Ig



## Basic Information

|   |  |   |
|---|--|---|
| <b>Catalog Number:</b><br>66260-1-Ig  | <b>GenBank Accession Number:</b><br>BC035719   | <b>Purification Method:</b><br>Protein G purification                                     |
| <b>Size:</b><br>150ul , Concentration: 1100 ug/ml by 1<br>Nanodrop and 893 ug/ml by Bradford<br>method using BSA as the standard; | <b>GeneID (NCBI):</b><br>UNIPROT ID:<br>P04217 | <b>CloneNo.:</b><br>4D4E5   |
| <b>Source:</b><br>Mouse   | <b>Full Name:</b><br>alpha-1-B glycoprotein    | <b>Recommended Dilutions:</b><br>WB 1:5000-1:50000<br>IHC 1:50-1:500<br>IF/ICC 1:50-1:500 |
| <b>Isotype:</b><br>IgG1   | <b>Calculated MW:</b><br>54 kDa                |   |
| <b>Immunogen Catalog Number:</b><br>AG5414  | <b>Observed MW:</b><br>72 kDa                  |   |

## Applications

**Tested Applications:**  
WB, IHC, IF/ICC, ELISA

**Species Specificity:**  
human

**Note-IHC: suggested antigen retrieval with  
TE buffer pH 9.0; (\*) Alternatively, antigen  
retrieval may be performed with citrate  
buffer pH 6.0**

**Positive Controls:**

**WB :** human plasma, human heart tissue, human  
placenta tissue

**IHC :** human liver tissue,

**IF/ICC :** HepG2 cells,

## Background Information

Alpha-1B-glycoprotein (A1BG) is a plasma protein and is a member of the immunoglobulin superfamily. A1BG contains 474 amino acids and has 5 intrachain disulfide bonds. It has been reported that cysteine-rich secretory protein 3 (CRISP-3) is a specific and high-affinity ligand of A1BG. A1BG-CRISP-3 complex displays a similar function in protecting the circulation from a potentially harmful effect of free CRISP3 (PMID: 15461460).

## Storage

**Storage:**  
Store at -20°C. Stable for one year after shipment.  
**Storage Buffer:**  
PBS with 0.02% sodium azide and 50% glycerol pH 7.3.  
Aliquoting is unnecessary for -20°C storage

\*\*\* 20ul sizes contain 0.1% BSA

For technical support and original validation data for this product please contact:

T: 1 (888) 4PTGLAB (1-888-478-4522) (toll free  
in USA), or 1(312) 455-8498 (outside USA)

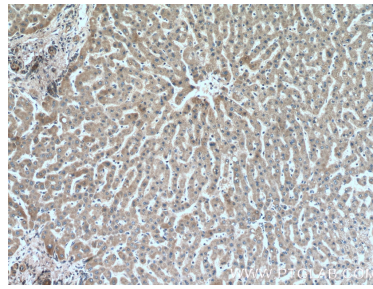
E: proteintech@ptglab.com  
W: ptglab.com

This product is exclusively available under Proteintech Group brand and is not available to purchase from any other manufacturer.

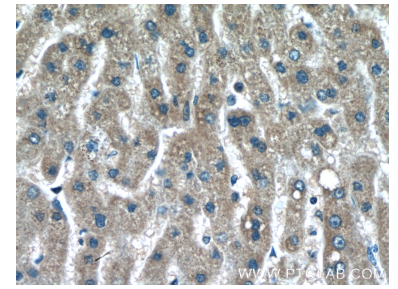
## Selected Validation Data



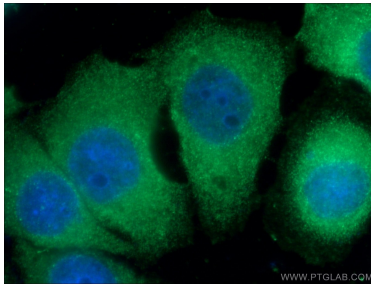
human plasma were subjected to SDS PAGE followed by western blot with 66260-1-Ig (Alpha-1B-Glycoprotein antibody) at dilution of 1:50000 incubated at room temperature for 1.5 hours.



Immunohistochemical analysis of paraffin-embedded human liver tissue slide using 66260-1-Ig (alpha-1B-glycoprotein antibody) at dilution of 1:200 (under 10x lens).



Immunohistochemical analysis of paraffin-embedded human liver tissue slide using 66260-1-Ig (alpha-1B-glycoprotein antibody) at dilution of 1:200 (under 40x lens).



Immunofluorescent analysis of (-20°C Ethanol) fixed HepG2 cells using 66260-1-Ig (alpha-1B-glycoprotein antibody) at dilution of 1:100 and Alexa Fluor 488-Conjugated Goat Anti-Mouse IgG(H+L).