

For Research Use Only

# 14-3-3 Sigma Monoclonal antibody

Catalog Number: 66251-1-Ig **4 Publications**



## Basic Information

<b>Catalog Number:</b> 66251-1-Ig	<b>GenBank Accession Number:</b> BC002995	<b>Purification Method:</b> Protein G purification
<b>Size:</b> 150ul, Concentration: 1803 ug/ml by Nanodrop and 1373 ug/ml by Bradford method using BSA as the standard;	<b>GeneID (NCBI):</b> 2810	<b>CloneNo.:</b> 3F10D9
<b>Source:</b> Mouse	<b>UNIPROT ID:</b> P31947	<b>Recommended Dilutions:</b> WB 1:2000-1:14000 IHC 1:200-1:8000 IF/ICC 1:20-1:200
<b>Isotype:</b> IgG1	<b>Full Name:</b> stratifin	
<b>Immunogen Catalog Number:</b> AG12644	<b>Calculated MW:</b> 28 kDa	
	<b>Observed MW:</b> 28-30 kDa	

## Applications

<b>Tested Applications:</b> WB, IHC, IF/ICC, ELISA	<b>Positive Controls:</b> WB : A431 cells, HeLa cells, MCF-7 cells
<b>Cited Applications:</b> WB, IF, IHC	<b>IHC :</b> human skin tissue, human breast cancer tissue, human breast hyperplasia tissue, human lung cancer tissue
<b>Species Specificity:</b> human	<b>IF/ICC :</b> MCF-7 cells,
<b>Cited Species:</b> human, mouse	
<b>Note-IHC: suggested antigen retrieval with TE buffer pH 9.0; (*) Alternatively, antigen retrieval may be performed with citrate buffer pH 6.0</b>	

## Background Information

14-3-3 Sigma is a member 14-3-3 family of highly conserved proteins participating in diverse cellular processes including cell cycle progression. It is exclusively present in various epithelial cells, and alternatively named as human epithelial marker (HEM), or stratifin. Alteration of its expression has been linked to cancer.

## Notable Publications

Author	Pubmed ID	Journal	Application
Yoshihiko Kobayashi	32661339	Nat Cell Biol	IF
Xuechao Li	34532265	Transl Androl Urol	IHC
Hua Chen	37956258	Environ Toxicol	IHC

## Storage

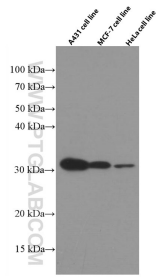
**Storage:**  
Store at -20°C. Stable for one year after shipment.  
**Storage Buffer:**  
PBS with 0.02% sodium azide and 50% glycerol pH 7.3.  
Aliquoting is unnecessary for -20°C storage

\*\*\* 20ul sizes contain 0.1% BSA

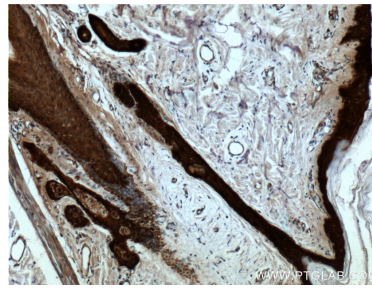
For technical support and original validation data for this product please contact:  
T: 1 (888) 4PTGLAB (1-888-478-4522) (toll free in USA), or 1(312) 455-8498 (outside USA)  
E: proteintech@ptglab.com  
W: ptglab.com

This product is exclusively available under Proteintech Group brand and is not available to purchase from any other manufacturer.

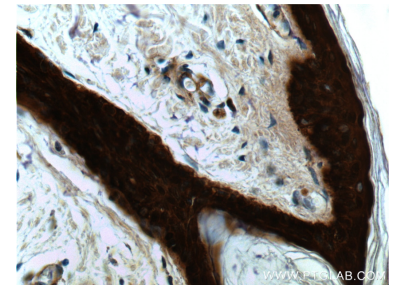
## Selected Validation Data



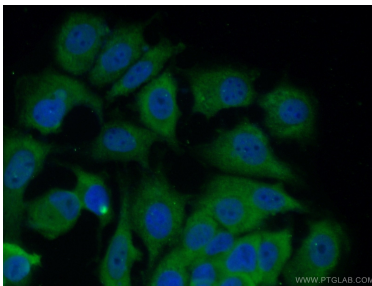
Various cell lysates were subjected to SDS PAGE followed by western blot with 66251-1-Ig (14-3-3 sigma antibody) at dilution of 1:7000 incubated at room temperature for 1.5 hours.



Immunohistochemical analysis of paraffin-embedded human skin tissue slide using 66251-1-Ig (14-3-3 sigma antibody at dilution of 1:2000 (under 10x lens).



Immunohistochemical analysis of paraffin-embedded human skin tissue slide using 66251-1-Ig (14-3-3 sigma antibody at dilution of 1:2000 (under 40x lens).



Immunofluorescent analysis of MCF-7 cells using 66251-1-Ig (14-3-3 sigma antibody) at dilution of 1:100 and Alexa Fluor 488-conjugated Goat Anti-Mouse IgG (H+L).