

For Research Use Only

AFM Monoclonal antibody

Catalog Number: 66113-1-Ig **1 Publications**



Basic Information

Catalog Number: 66113-1-Ig	GenBank Accession Number: BC109020	Purification Method: Protein G purification
Size: 150ul, Concentration: 900 ug/ml by Nanodrop and 553 ug/ml by Bradford method using BSA as the standard;	GeneID (NCBI): 173	CloneNo.: 2G9F6
Source: Mouse	UNIPROT ID: P43652	Recommended Dilutions: WB 1:2000-1:10000 IP 0.5-4.0 ug for 1.0-3.0 mg of total protein lysate IHC 1:50-1:500 IF/ICC 1:200-1:800
Isotype: IgG1	Full Name: afamin	
Immunogen Catalog Number: AG16866	Calculated MW: 599 aa, 69 kDa	
	Observed MW: 85 kDa	

Applications

Tested Applications: WB, IHC, IF/ICC, IP, ELISA	Positive Controls: WB : human plasma, IP : human plasma tissue, IHC : mouse brain tissue, human liver tissue IF/ICC : HeLa cells,
Cited Applications: WB	
Species Specificity: human, mouse	
Note-IHC: suggested antigen retrieval with TE buffer pH 9.0; (*) Alternatively, antigen retrieval may be performed with citrate buffer pH 6.0	

Background Information

AFM (Afamin) is a member of the albumin superfamily, which comprises albumin, vitamin D-binding protein, a-fetoprotein, and afamin. AFM is present in the plasma/serum, cerebrospinal fluid, and follicular fluid, and functions as a vitamin E-binding protein. Alterations of expression level of AFM have been linked to variety of diseases like cancer.

Notable Publications

Author	Pubmed ID	Journal	Application
Qing-Xiu Liu	29983616	J Ginseng Res	WB

Storage

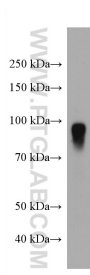
Storage:
Store at -20°C. Stable for one year after shipment.
Storage Buffer:
PBS with 0.02% sodium azide and 50% glycerol pH 7.3.
Aliquoting is unnecessary for -20°C storage

*** 20ul sizes contain 0.1% BSA

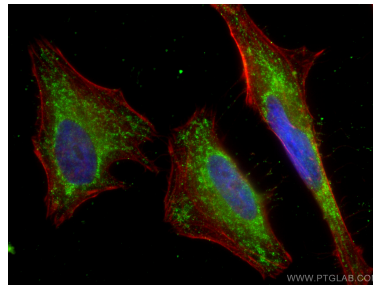
For technical support and original validation data for this product please contact:
T: 1 (888) 4PTGLAB (1-888-478-4522) (toll free in USA), or 1(312) 455-8498 (outside USA)
E: proteintech@ptglab.com
W: ptglab.com

This product is exclusively available under Proteintech Group brand and is not available to purchase from any other manufacturer.

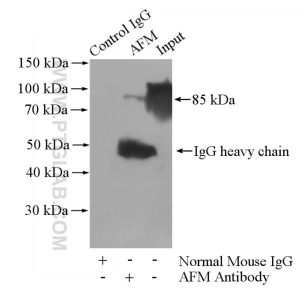
Selected Validation Data



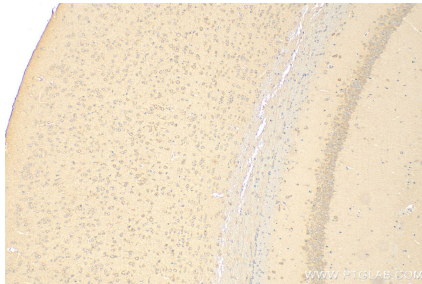
human plasma were subjected to SDS PAGE followed by western blot with 66113-1-Ig (AFM antibody) at dilution of 1:5000 incubated at room temperature for 1.5 hours.



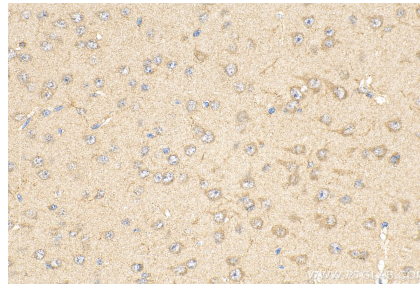
Immunofluorescent analysis of (-20°C Ethanol) fixed HeLa cells using AFM antibody (66113-1-Ig, Clone: 2G9F6) at dilution of 1:400 and CoraLite®488-Conjugated AffiniPure Goat Anti-Mouse IgG(H+L), CL594-Phalloidin (red).



IP result of anti-AFM (IP:66113-1-Ig, 5ug; Detection:66113-1-Ig 1:500) with human plasma lysate 4000ug.



Immunohistochemical analysis of paraffin-embedded mouse brain tissue slide using 66113-1-Ig (AFM antibody) at dilution of 1:200 (under 10x lens). Heat mediated antigen retrieval with Tris-EDTA buffer (pH 9.0).



Immunohistochemical analysis of paraffin-embedded mouse brain tissue slide using 66113-1-Ig (AFM antibody) at dilution of 1:200 (under 40x lens). Heat mediated antigen retrieval with Tris-EDTA buffer (pH 9.0).