

For Research Use Only

# Rat IgG2b Isotype Control (LTF-2)

Catalog Number: 65211-1-Ig **1 Publications**



## Basic Information

Catalog Number:

65211-1-Ig

Size:

500ug, 0.5 mg/mL

Source:

Rat

Isotype:

IgG2b, kappa

GenBank Accession Number:

GeneID (NCBI):

Full Name:

Purification Method:

Affinity purification

CloneNo.:

LTF-2

## Applications

Tested Applications:

FC

Species Specificity:

## Background Information

The LTF-2 immunoglobulin is useful as an isotype-matched control. The LTF-2 immunoglobulin has an unknown binding specificity and is used as an isotype control for rat IgG2b antibodies. This antibody has been quality-tested for flow cytometry as negative control.

## Notable Publications

Author	Pubmed ID	Journal	Application
Xinzhi Li	34893641	Nat Commun	

## Storage

Storage:

Store at 2-8°C. Stable for one year after shipment.

Storage Buffer:

PBS with 0.09% sodium azide.

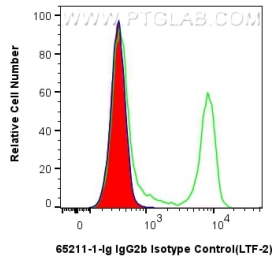
For technical support and original validation data for this product please contact:

T: 1 (888) 4PTGLAB (1-888-478-4522) (toll free in USA), or 1(312) 455-8498 (outside USA)

E: [proteintech@ptglab.com](mailto:proteintech@ptglab.com)  
W: [ptglab.com](http://ptglab.com)

**This product is exclusively available under Proteintech Group brand and is not available to purchase from any other manufacturer.**

## Selected Validation Data



$1 \times 10^6$  mouse splenocytes were surface stained with 0.25  $\mu$ g Rat IgG2b Isotype Control (LTF-2) (65211-1-Ig, Clone: LTF-2) (red) or Anti-Mouse CD4 (GK1.5) (65104-1-Ig, Clone: GK1.5) (green), and FITC anti-rat IgG2b Antibody. Cells were not fixed.