

For Research Use Only

# Anti-Human CD3 (SK7)

Catalog Number: 65148-1-Ig



## Basic Information

<b>Catalog Number:</b> 65148-1-Ig	<b>GenBank Accession Number:</b> BC049847	<b>Purification Method:</b> Affinity purification
<b>Size:</b> 100ug, 500 µg/ml	<b>GeneID (NCBI):</b> 916	<b>CloneNo.:</b> SK7
<b>Source:</b> Mouse	<b>ENSEMBL Gene ID:</b> ENSG00000198851	
<b>Isotype:</b> IgG1, kappa	<b>Full Name:</b> CD3e molecule, epsilon (CD3-TCR complex)	
	<b>Calculated MW:</b> 207 aa, 23 kDa	

## Applications

**Tested Applications:**  
FC

**Species Specificity:**  
Human

## Background Information

CD3 is a multimeric protein associated with the T-cell receptor (TCR) to form a complex involved in antigen recognition and signal transduction (PMID: 15885124). CD3 is composed of CD3γ, δ, ε, and ζ chains (PMID: 1826255). It is expressed by thymocytes in a developmentally regulated manner, T cells, and some NK cells (PMID: 3289580). The TCR recognizes antigens bound to major histocompatibility complex (MHC) molecules. TCR-mediated peptide-MHC recognition is transmitted to the CD3 complex, leading to the intracellular signal transduction (PMID: 11985657).

## Storage

**Storage:**  
Store at 2-8°C. Stable for one year after shipment.

**Storage Buffer:**  
PBS with 0.1% sodium azide, pH 7.3.

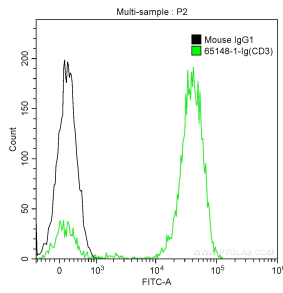
For technical support and original validation data for this product please contact:

T: 1 (888) 4PTGLAB (1-888-478-4522) (toll free in USA), or 1(312) 455-8498 (outside USA)

E: [proteintech@ptglab.com](mailto:proteintech@ptglab.com)  
W: [ptglab.com](http://ptglab.com)

**This product is exclusively available under Proteintech Group brand and is not available to purchase from any other manufacturer.**

## Selected Validation Data



$1 \times 10^6$  human peripheral blood lymphocytes were surface stained with 1  $\mu$ g Anti-Human CD3 (65148-1-Ig, Clone: SK7) and CoraLite<sup>®</sup>488-Conjugated AffiniPure Goat Anti-Mouse IgG(H+L) at dilution 1:1000 (green), or stained with 1  $\mu$ g isotype control and CoraLite<sup>®</sup>488-Conjugated AffiniPure Goat Anti-Mouse IgG(H+L) at dilution 1:1000 (black). Cells were not fixed.