

For Research Use Only

# ACPP Monoclonal antibody

Catalog Number: 60176-1-Ig **1 Publications**



## Basic Information

<b>Catalog Number:</b> 60176-1-Ig	<b>GenBank Accession Number:</b> BC007460	<b>Purification Method:</b> Protein A purification
<b>Size:</b> 150ul , Concentration: 1600 ug/ml by 55 Nanodrop and 1000 ug/ml by Bradford method using BSA as the standard;	<b>GeneID (NCBI):</b> P15309	<b>CloneNo.:</b> 1G2C9
<b>Source:</b> Mouse	<b>UNIPROT ID:</b> P15309	<b>Recommended Dilutions:</b> WB: 1:1000-1:6000 IHC: 1:500-1:2000 IF-P: 1:200-1:800
<b>Isotype:</b> IgG2a	<b>Full Name:</b> acid phosphatase, prostate	
<b>Immunogen Catalog Number:</b> AG8578	<b>Calculated MW:</b> 418 aa, 48 kDa	
	<b>Observed MW:</b> 45-50 kDa	

## Applications

<b>Tested Applications:</b> WB, IHC, IF-P, ELISA	<b>Positive Controls:</b> WB : K-562 cells, human testis tissue IHC : human prostate hyperplasia tissue, IF-P : human prostate cancer tissue,
<b>Cited Applications:</b> WB	
<b>Species Specificity:</b> human, rat	
<b>Cited Species:</b> human	
<b>Note-IHC: suggested antigen retrieval with TE buffer pH 9.0; (*) Alternatively, antigen retrieval may be performed with citrate buffer pH 6.0</b>	

## Background Information

ACPP is also named as PAP(prostatic acid phosphatase),5'-nucleotidase,thiamine monophosphatas and Belongs to the histidine acid phosphatase family.This enzyme is a homodimeric glycoprotein with a subunit molecular mass of 50 kDa and is an androgen-stimulated secretory product of the human prostate gland(PMID:8132635).It is also a non-specific phosphatase and has been implicated in the progression of prostate cancer, which inactivates LPA in human seminal plasma(PMID:15280042). This protein has three glycosylation sites(PMID:10639192;12525165).

## Notable Publications

Author	Pubmed ID	Journal	Application
Chong Wang	35185790	Front Endocrinol (Lausanne)	WB

## Storage

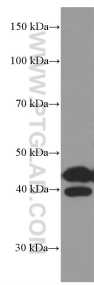
**Storage:**  
Store at -20°C. Stable for one year after shipment.  
**Storage Buffer:**  
PBS with 0.02% sodium azide and 50% glycerol, pH7.3  
Aliquoting is unnecessary for -20°C storage

\*\*\* 20ul sizes contain 0.1% BSA

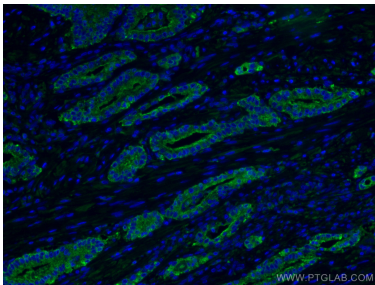
For technical support and original validation data for this product please contact:  
T: 1 (888) 4PTGLAB (1-888-478-4522) (toll free in USA), or 1(312) 455-8498 (outside USA)  
E: proteintech@ptglab.com  
W: ptglab.com

This product is exclusively available under Proteintech Group brand and is not available to purchase from any other manufacturer.

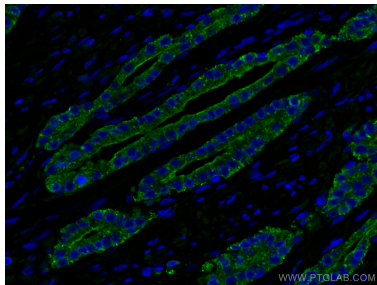
Selected Validation Data



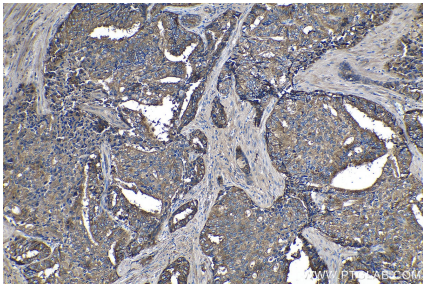
K-562 cells were subjected to SDS PAGE followed by western blot with 60176-1-Ig (ACPP Antibody) at dilution of 1:3000 incubated at room temperature for 1.5 hours.



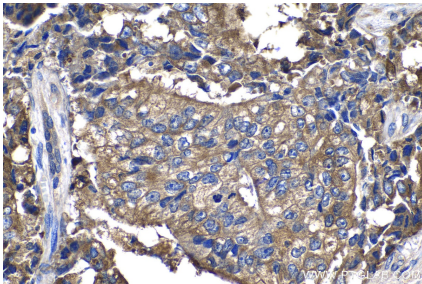
Immunofluorescent analysis of (4% PFA) fixed human prostate cancer tissue using ACPP antibody (60176-1-Ig, Clone: 1G2C9 ) at dilution of 1:400 and CoraLite®488-Conjugated AffiniPure Goat Anti-Mouse IgG(H+L).



Immunofluorescent analysis of (4% PFA) fixed human prostate cancer tissue using ACPP antibody (60176-1-Ig, Clone: 1G2C9 ) at dilution of 1:400 and CoraLite®488-Conjugated AffiniPure Goat Anti-Mouse IgG(H+L).



Immunohistochemical analysis of paraffin-embedded human prostate hyperplasia tissue slide using 60176-1-Ig (ACPP antibody) at dilution of 1:1000 (under 10x lens).



Immunohistochemical analysis of paraffin-embedded human prostate hyperplasia tissue slide using 60176-1-Ig (ACPP antibody) at dilution of 1:1000 (under 40x lens).