

For Research Use Only

ABCD1 Monoclonal antibody

Catalog Number: 60153-1-Ig **Featured Product**



Basic Information

Catalog Number: 60153-1-Ig	GenBank Accession Number: BC025358	Purification Method: Protein A purification
Size: 150ul , Concentration: 1900 ug/ml by 215 Nanodrop and 1000 ug/ml by Bradford method using BSA as the standard;	GeneID (NCBI): 215	CloneNo.: 1H8E5
Source: Mouse	UNIPROT ID: P33897	Recommended Dilutions: WB 1:500-1:2000 IF/ICC 1:50-1:500
Isotype: IgG1	Full Name: ATP-binding cassette, sub-family D (ALD), member 1	
Immunogen Catalog Number: AG12757	Calculated MW: 745 aa, 83 kDa	
	Observed MW: 75 kDa	

Applications

Tested Applications: WB, IF/ICC, ELISA	Positive Controls:
Species Specificity: human	WB : HeLa cells, IF/ICC : HeLa cells,

Background Information

ABCD1 (also known as ALDP) is a member of the ATP-binding cassette (ABC) transporter superfamily which functions as transporter for a wide variety of substrates. It localizes to the peroxisomal membrane. The exact function is not clear so far. Various mutations of ABCD1 cause X-linked adrenoleukodystrophy (X-ALD), an inherited neurodegenerative disease affecting the nervous system white matter and adrenal cortex.

Storage

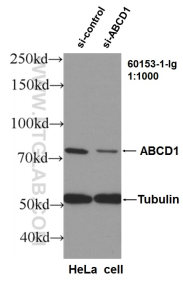
Storage:
Store at -20°C. Stable for one year after shipment.
Storage Buffer:
PBS with 0.02% sodium azide and 50% glycerol pH 7.3.
Aliquoting is unnecessary for -20°C storage

*** 20ul sizes contain 0.1% BSA

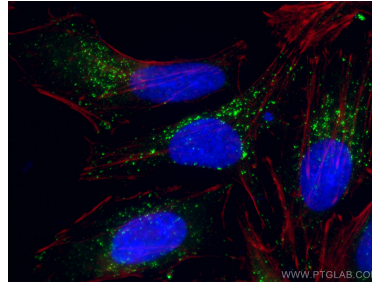
For technical support and original validation data for this product please contact:
T: 1 (888) 4PTGLAB (1-888-478-4522) (toll free in USA), or 1(312) 455-8498 (outside USA)
E: proteintech@ptglab.com
W: ptglab.com

This product is exclusively available under Proteintech Group brand and is not available to purchase from any other manufacturer.

Selected Validation Data



WB result of ABCD1 antibody (60153-1-Ig, 1:1000) with si-Control and si-ABCD1 transfected HeLa cells.



Immunofluorescent analysis of (-20°C Ethanol) fixed HeLa cells using ABCD1 antibody (60153-1-Ig, Clone: 1H8E5) at dilution of 1:100 and CoraLite®488-Conjugated Goat Anti-Mouse IgG(H+L). DAPI (blue).