

For Research Use Only

SCPEP1 Polyclonal antibody

Catalog Number:29781-1-AP



Basic Information

Catalog Number: 29781-1-AP	GenBank Accession Number: BC072405	Purification Method: Antigen affinity purification
Size: 150ul , Concentration: 500 ug/ml by Nanodrop;	GeneID (NCBI): 59342	Recommended Dilutions: WB 1:1000-1:4000 IHC 1:50-1:500
Source: Rabbit	UNIPROT ID: Q9HB40	
Isotype: IgG	Full Name: serine carboxypeptidase 1	
Immunogen Catalog Number: AG31396	Calculated MW: 452 aa, 51 kDa	
	Observed MW: 33-51 kDa	

Applications

Tested Applications: WB, IHC, ELISA	Positive Controls: WB : A431 cells, IHC : mouse embryo tissue,
Species Specificity: Human, mouse	

Note-IHC: suggested antigen retrieval with TE buffer pH 9.0; (*) Alternatively, antigen retrieval may be performed with citrate buffer pH 6.0

Background Information

SCPEP1 encodes retinoid-inducible serine carboxypeptidase (PMID:12975309). SCPEP1 and Cathepsin A play roles in regulation of vasoconstriction via inactivation of endothelin-1 (PubMed:24586188). The protein is widely expressed during mouse embryogenesis by immunohistochemical (PubMed:16461364). Scapep1 is proteolytically cleaved to a mature enzyme which is smaller than 51 kDa (PMID:16461364).

Storage

Storage:
Store at -20°C. Stable for one year after shipment.
Storage Buffer:
PBS with 0.02% sodium azide and 50% glycerol pH 7.3.
Aliquoting is unnecessary for -20°C storage

*** 20ul sizes contain 0.1% BSA

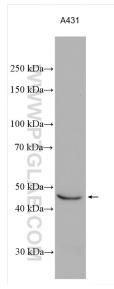
For technical support and original validation data for this product please contact:

T: 1 (888) 4PTGLAB (1-888-478-4522) (toll free in USA), or 1(312) 455-8498 (outside USA)

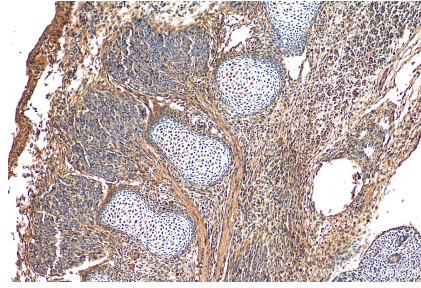
E: proteintech@ptglab.com
W: ptglab.com

This product is exclusively available under Proteintech Group brand and is not available to purchase from any other manufacturer.

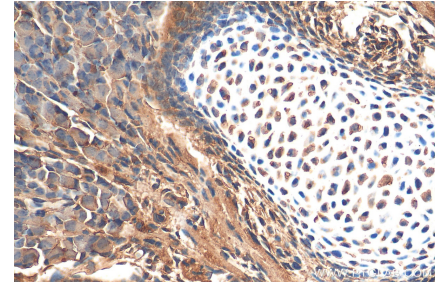
Selected Validation Data



A431 cells were subjected to SDS PAGE followed by western blot with 29781-1-AP (SCPEP1 antibody) at dilution of 1:2000 incubated at room temperature for 1.5 hours.



Immunohistochemical analysis of paraffin-embedded mouse embryo tissue slide using 29781-1-AP (SCPEP1 antibody) at dilution of 1:200 (under 10x lens). Heat mediated antigen retrieval with Tris-EDTA buffer (pH 9.0).



Immunohistochemical analysis of paraffin-embedded mouse embryo tissue slide using 29781-1-AP (SCPEP1 antibody) at dilution of 1:200 (under 40x lens). Heat mediated antigen retrieval with Tris-EDTA buffer (pH 9.0).