

For Research Use Only

SHH Polyclonal antibody

Catalog Number: 29752-1-AP



Basic Information

Catalog Number: 29752-1-AP	GenBank Accession Number: NM_000193	Purification Method: Antigen affinity purification
Size: 150ul , Concentration: 500 ug/ml by Nanodrop;	GeneID (NCBI): 6469	Recommended Dilutions: WB 1:500-1:3000 IHC 1:50-1:500
Source: Rabbit	UNIPROT ID: Q15465	
Isotype: IgG	Full Name: sonic hedgehog homolog (Drosophila)	
Immunogen Catalog Number: AG31338	Calculated MW: 50 kDa	
	Observed MW: 50-60 kDa	

Applications

Tested Applications:
WB, IHC, FC (Intra), ELISA

Species Specificity:
human, mouse, rat

Note-IHC: suggested antigen retrieval with TE buffer pH 9.0; (*) Alternatively, antigen retrieval may be performed with citrate buffer pH 6.0

Positive Controls:

WB : HeLa cells, HepG2 cells, MCF-7 cells, MDA-MB-231 cells, mouse liver tissue, rat liver tissue

IHC : mouse embryo tissue,

Background Information

SHH, Sonic hedgehog protein, binds to the patched (PTCH1) receptor, which functions in association with smoothened (SMO), to activate the transcription of target genes (PMID: 10753901). In the absence of SHH, PTCH1 represses the constitutive signaling activity of SMO (PMID: 10753901). SHH is synthesized as a 45 kDa precursor that undergoes an autocatalytic processing event that produces a 19 kDa N-terminal product, responsible for all signaling activities, and a 25 kDa C-terminal fragment (PMID: 10753901, PMID: 16282375).

Storage

Storage:
Store at -20°C. Stable for one year after shipment.
Storage Buffer:
PBS with 0.02% sodium azide and 50% glycerol pH 7.3.
Aliquoting is unnecessary for -20°C storage

***** 20ul sizes contain 0.1% BSA**

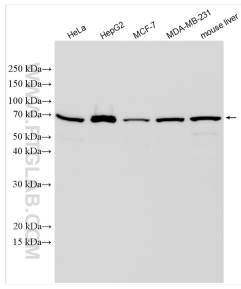
For technical support and original validation data for this product please contact:

T: 1 (888) 4PTGLAB (1-888-478-4522) (toll free in USA), or 1(312) 455-8498 (outside USA)

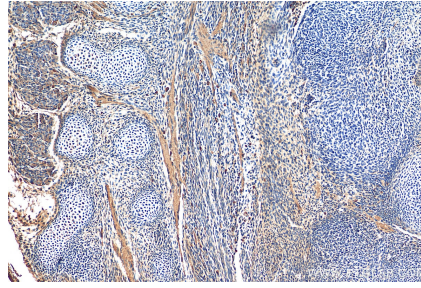
E: proteintech@ptglab.com
W: ptglab.com

This product is exclusively available under Proteintech Group brand and is not available to purchase from any other manufacturer.

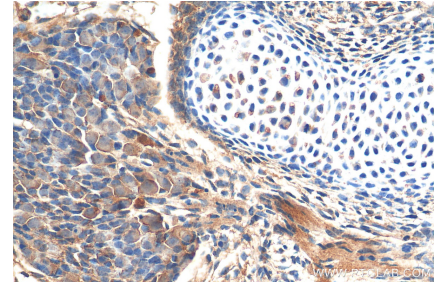
Selected Validation Data



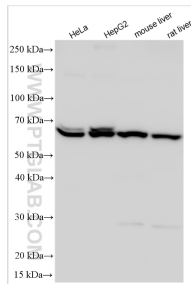
Various lysates were subjected to SDS PAGE followed by western blot with 29752-1-AP (SHH antibody) at dilution of 1:1500 incubated at room temperature for 1.5 hours.



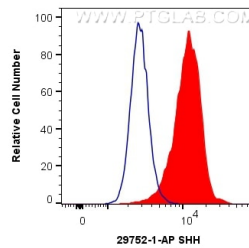
Immunohistochemical analysis of paraffin-embedded mouse embryo tissue slide using 29752-1-AP (SHH antibody) at dilution of 1:200 (under 10x lens). Heat mediated antigen retrieval with Tris-EDTA buffer (pH 9.0).



Immunohistochemical analysis of paraffin-embedded mouse embryo tissue slide using 29752-1-AP (SHH antibody) at dilution of 1:200 (under 40x lens). Heat mediated antigen retrieval with Tris-EDTA buffer (pH 9.0).



Various lysates were subjected to SDS PAGE followed by western blot with 29752-1-AP (SHH antibody) at dilution of 1:18000 incubated at room temperature for 1.5 hours.



1X10⁶ HeLa cells were intracellularly stained with 0.4 ug Anti-Human SHH (29752-1-AP) and CoraLite[®]488-Conjugated Goat Anti-Rabbit IgG(H+L) at dilution 1:1000 (red), or 0.4 ug Control Antibody. Cells were fixed with 4% PFA and permeabilized with Flow Cytometry Perm Buffer (PF00011-C).