

For Research Use Only

Involucrin Polyclonal antibody

Catalog Number: 28462-1-AP **6 Publications**



Basic Information

Catalog Number: 28462-1-AP	GenBank Accession Number: NM_005547	Purification Method: Antigen affinity purification
Size: 150ul , Concentration: 450 µg/ml by Nanodrop;	GeneID (NCBI): 3713	Recommended Dilutions: WB 1:1000-1:4000 IHC 1:50-1:500 IF 1:50-1:500
Source: Rabbit	UNIPROT ID: P07476	
Isotype: IgG	Full Name: involucrin	
Immunogen Catalog Number: AG29585	Calculated MW: 68 kDa	
	Observed MW: 120 kDa	

Applications

Tested Applications: WB, IF, IHC, ELISA	Positive Controls: WB : A431 cells, HT-1080 cells, HT-29 cells IHC : human tonsillitis tissue, human oesophagus cancer tissue, human skin cancer tissue IF : A431 cells,
Cited Applications: WB, IF, IHC	
Species Specificity: Human	
Cited Species: human	
Note-IHC: suggested antigen retrieval with TE buffer pH 9.0; (*) Alternatively, antigen retrieval may be performed with citrate buffer pH 6.0	

Background Information

Involucrin is a protein precursor of the epidermal cornified envelope that is assembled in the outermost layers of the epidermis. Involucrin expression is restricted to the suprabasal epidermal layers (spinous and granular layers) during normal keratinocyte differentiation and is a useful marker of terminal differentiation. The predicted MW of involucrin is 68 kDa, but it also forms 120 kDa dimers, while different reports provided variable results ranging from 90-140 kDa. (PMID: 11099111, 1503502, 12150517)

Notable Publications

Author	Pubmed ID	Journal	Application
Zhenzhuo Li	34562563	J Ethnopharmacol	WB,IHC
Yushi Katsuyama	36047208	Biol Pharm Bull	WB
Jie-Fang Gao	35533554	Int Immunopharmacol	IF

Storage

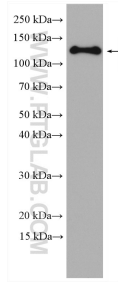
Storage:
Store at -20°C. Stable for one year after shipment.
Storage Buffer:
PBS with 0.02% sodium azide and 50% glycerol pH 7.3.
Aliquoting is unnecessary for -20°C storage

*** 20ul sizes contain 0.1% BSA

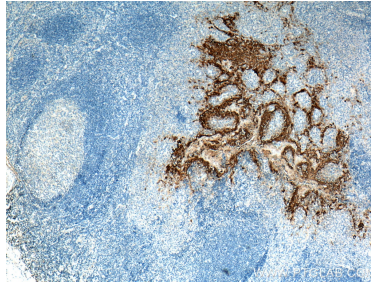
For technical support and original validation data for this product please contact:
T: 1 (888) 4PTGLAB (1-888-478-4522) (toll free in USA), or 1(312) 455-8498 (outside USA)
E: proteintech@ptglab.com
W: ptglab.com

This product is exclusively available under Proteintech Group brand and is not available to purchase from any other manufacturer.

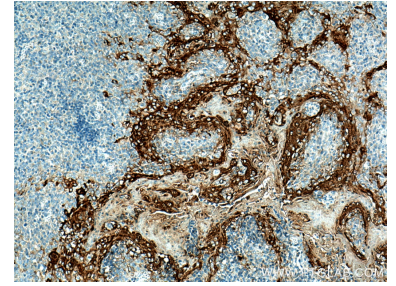
Selected Validation Data



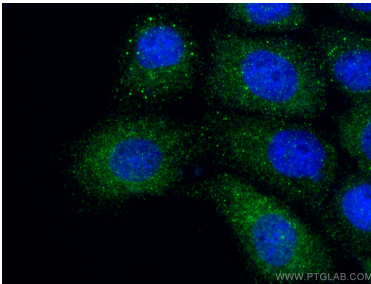
A431 cells were subjected to SDS PAGE followed by western blot with 28462-1-AP (Involucrin antibody) at dilution of 1:2000 incubated at room temperature for 1.5 hours.



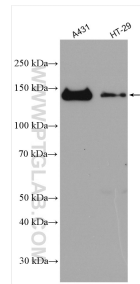
Immunohistochemical analysis of paraffin-embedded human tonsillitis tissue slide using 28462-1-AP (Involucrin antibody) at dilution of 1:200 (under 4x lens). Heat mediated antigen retrieval with Tris-EDTA buffer (pH 9.0).



Immunohistochemical analysis of paraffin-embedded human tonsillitis tissue slide using 28462-1-AP (Involucrin antibody) at dilution of 1:200 (under 10x lens). Heat mediated antigen retrieval with Tris-EDTA buffer (pH 9.0).



Immunofluorescent analysis of (4% PFA) fixed A431 cells using Involucrin antibody (28462-1-AP) at dilution of 1:200 and CoraLite®488-Conjugated AffiniPure Goat Anti-Rabbit IgG(H+L).



Various lysates were subjected to SDS PAGE followed by western blot with 28462-1-AP (Involucrin antibody) at dilution of 1:10000 incubated at room temperature for 1.5 hours.