

For Research Use Only

TGF beta 2 Polyclonal antibody

Catalog Number: 28426-1-AP **6 Publications**



Basic Information

Catalog Number: 28426-1-AP	GenBank Accession Number: NM_001135599	Purification Method: Antigen affinity purification
Size: 150ul, Concentration: 500 ug/ml by Nanodrop;	GeneID (NCBI): 7042	Recommended Dilutions: WB 1:500-1:2000 IHC 1:50-1:500 IF/ICC 1:200-1:800
Source: Rabbit	UNIPROT ID: P61812	
Isotype: IgG	Full Name: transforming growth factor, beta 2	
Immunogen Catalog Number: AG29126	Calculated MW: 48 kDa	
	Observed MW: 48 kDa, 51 kDa	

Applications

Tested Applications: WB, IHC, IF/ICC, ELISA	Positive Controls: WB: A549 cells, U2OS cells, mouse kidney tissue
Cited Applications: WB, IF	IHC: human prostate cancer tissue,
Species Specificity: Human, mouse	IF/ICC: HeLa cells,
Cited Species: human, rat, mouse, rabbit	

Note-IHC: suggested antigen retrieval with TE buffer pH 9.0; (*) Alternatively, antigen retrieval may be performed with citrate buffer pH 6.0

Background Information

Transforming growth factor beta-2 (TGFB2), also named G-TSF, BSC-1 cell growth inhibitor, Polyergin and Cetermin, belongs to the TGF-beta family. TGFB2 is a secreted protein and contains a 19aa signal peptides at its N-terminal. Heterodimers with TGFB1 and with TGFB2 have been found in bone. It was proved to have suppressive effects on interleukin-2 dependent T-cell growth.

Notable Publications

Author	Pubmed ID	Journal	Application
Zhaodong Li	36143417	Life (Basel)	WB
Daniela M. Sousa	36428611	Cancers (Basel)	IF
Yang Chen	35865926	Front Microbiol	WB

Storage

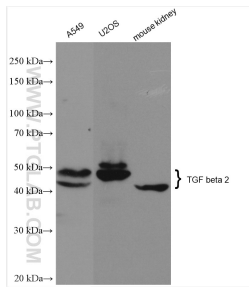
Storage:
Store at -20°C. Stable for one year after shipment.
Storage Buffer:
PBS with 0.02% sodium azide and 50% glycerol pH 7.3.
Aliquoting is unnecessary for -20°C storage

***** 20ul sizes contain 0.1%BSA**

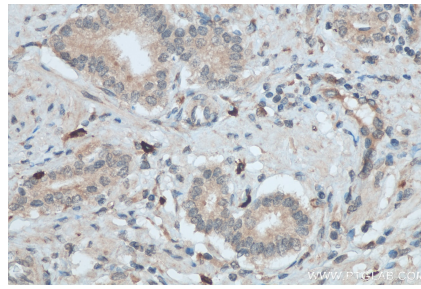
For technical support and original validation data for this product please contact:
T: 1 (888) 4PTGLAB (1-888-478-4522) (toll free in USA), or 1(312) 455-8498 (outside USA)
E: proteintech@ptglab.com
W: ptglab.com

This product is exclusively available under Proteintech Group brand and is not available to purchase from any other manufacturer.

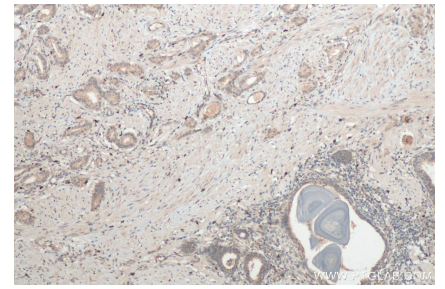
Selected Validation Data



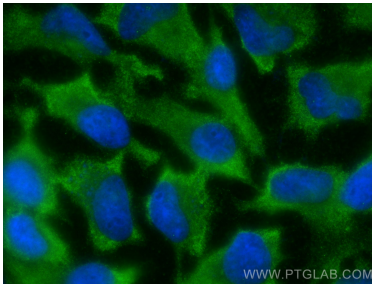
Various lysates were subjected to SDS PAGE followed by western blot with 28426-1-AP (TGF beta 2 antibody) at dilution of 1:1000 incubated at room temperature for 1.5 hours.



Immunohistochemical analysis of paraffin-embedded human prostate cancer tissue slide using 28426-1-AP (TGF beta 2 antibody) at dilution of 1:200 (under 40x lens). Heat mediated antigen retrieval with Tris-EDTA buffer (pH 9.0).



Immunohistochemical analysis of paraffin-embedded human prostate cancer tissue slide using 28426-1-AP (TGF beta 2 antibody) at dilution of 1:200 (under 10x lens). Heat mediated antigen retrieval with Tris-EDTA buffer (pH 9.0).



Immunofluorescent analysis of (-20°C Ethanol) fixed HeLa cells using TGF beta 2 antibody (28426-1-AP) at dilution of 1:400 and CoraLite®488-Conjugated AffiniPure Goat Anti-Rabbit IgG(H+L) (SA00013-2).