

For Research Use Only

TH1L Polyclonal antibody

Catalog Number: 28417-1-AP



Basic Information

Catalog Number:

28417-1-AP

Size:

150ul, Concentration: 700 µg/ml by Nanodrop and 333 µg/ml by Bradford method using BSA as the standard;

Source:

Rabbit

Isotype:

IgG

Immunogen Catalog Number:

AG29262

GenBank Accession Number:

BC014952

GeneID (NCBI):

51497

UNIPROT ID:

Q8IXH7

Full Name:

TH1-like (Drosophila)

Calculated MW:

66 kDa

Observed MW:

60 kDa

Purification Method:

Antigen affinity purification

Recommended Dilutions:

WB 1:500-1:3000

IF/ICC 1:50-1:500

Applications

Tested Applications:

WB, IF, ELISA

Species Specificity:

Human

Positive Controls:

WB : HeLa cells, Jurkat cells, MCF-7 cells

IF/ICC : HeLa cells,

Storage

Storage:

Store at -20°C. Stable for one year after shipment.

Storage Buffer:

PBS with 0.02% sodium azide and 50% glycerol pH 7.3.

Aliquoting is unnecessary for -20°C storage

***** 20ul sizes contain 0.1% BSA**

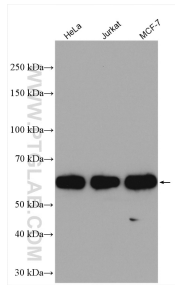
For technical support and original validation data for this product please contact:

T: 1 (888) 4PTGLAB (1-888-478-4522) (toll free in USA), or 1(312) 455-8498 (outside USA)

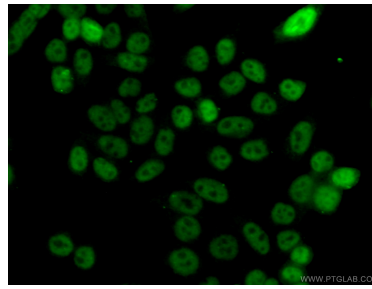
E: proteintech@ptglab.com
W: ptglab.com

This product is exclusively available under Proteintech Group brand and is not available to purchase from any other manufacturer.

Selected Validation Data



Various lysates were subjected to SDS PAGE followed by western blot with 28417-1-AP (TH1L antibody) at dilution of 1:1500 incubated at room temperature for 1.5 hours.



Immunofluorescent analysis of (4% PFA) fixed HeLa cells using 28417-1-AP (TH1L antibody) at dilution of 1:100 and CoraLite488-Conjugated AffiniPure Goat Anti-Rabbit IgG(H+L).