

For Research Use Only

EEA1 Polyclonal antibody

Catalog Number: 28347-1-AP

Featured Product

5 Publications



Basic Information

Catalog Number: 28347-1-AP	GenBank Accession Number: NM_003566	Purification Method: Antigen affinity purification
Size: 150ul , Concentration: 650 µg/ml by Nanodrop;	GeneID (NCBI): 8411	Recommended Dilutions: WB 1:2000-1:16000 IHC 1:50-1:500 IF/ICC 1:200-1:800
Source: Rabbit	UNIPROT ID: Q15075	
Isotype: IgG	Full Name: early endosome antigen 1	
Immunogen Catalog Number: AG28814	Calculated MW: 162 kDa	
	Observed MW: 170 kDa	

Applications

Tested Applications: WB, IF, IHC, ELISA	Positive Controls: WB : A431 cells, HepG2 cells, HeLa cells, Jurkat cells, NIH/3T3 cells, C6 cells IHC : human breast cancer tissue, mouse brain tissue IF/ICC : HepG2 cells,
Cited Applications: IF	
Species Specificity: Human, Mouse, Rat	
Cited Species: human, mouse, monkey	
Note-IHC: suggested antigen retrieval with TE buffer pH 9.0; (*) Alternatively, antigen retrieval may be performed with citrate buffer pH 6.0	

Background Information

Early endosome antigen 1 (EEA1) is a marker of early endosomes and has an important role in endosomal trafficking. EEA1 contains coiled-coil regions and an FYVE-type zinc finger which interacts with phosphatidylinositol-3-phosphate. EEA1 functions as a Rab5 effector, mediates endosome docking and, together with SNAREs, leads to membrane fusion.

Notable Publications

Author	Pubmed ID	Journal	Application
Huawei Wang	34865123	Nucleic Acids Res	IF
Yafeng Dou	35603194	Front Immunol	IF
Yanqiu Zhang	35393432	Cell Death Dis	IF

Storage

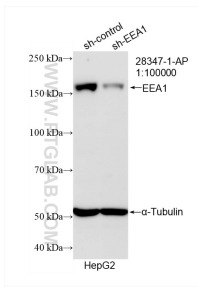
Storage:
Store at -20°C. Stable for one year after shipment.
Storage Buffer:
PBS with 0.02% sodium azide and 50% glycerol pH 7.3.
Aliquoting is unnecessary for -20°C storage

*** 20ul sizes contain 0.1% BSA

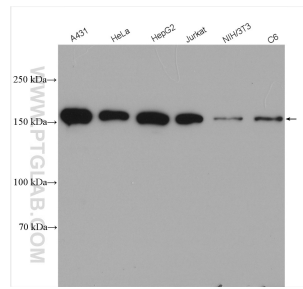
For technical support and original validation data for this product please contact:
T: 1 (888) 4PTGLAB (1-888-478-4522) (toll free in USA), or 1(312) 455-8498 (outside USA)
E: proteintech@ptglab.com
W: ptglab.com

This product is exclusively available under Proteintech Group brand and is not available to purchase from any other manufacturer.

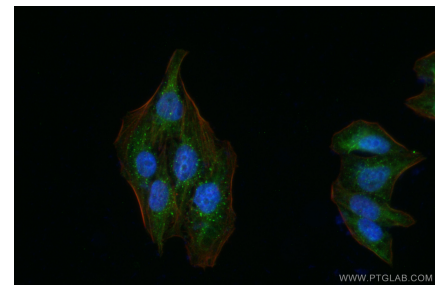
Selected Validation Data



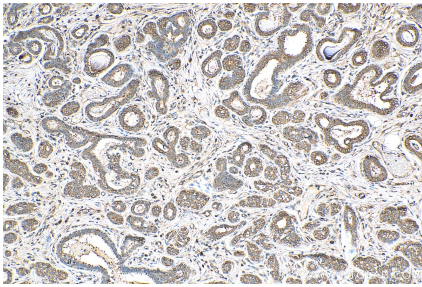
WB result of EEA1 antibody (28347-1-AP; 1:100000; incubated at room temperature for 1.5 hours) with sh-Control and sh-EEA1 transfected HepG2 cells.



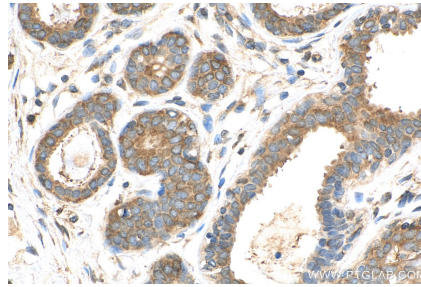
Various lysates were subjected to SDS PAGE followed by western blot with 28347-1-AP (EEA1 antibody) at dilution of 1:8000 incubated at room temperature for 1.5 hours.



Immunofluorescent analysis of (4% PFA) fixed HepG2 cells using EEA1 antibody (28347-1-AP) at dilution of 1:400 and CoraLite@488-Conjugated AffiniPure Goat Anti-Rabbit IgG(H+L) (SA00013-2).



Immunohistochemical analysis of paraffin-embedded human breast cancer tissue slide using 28347-1-AP (EEA1 antibody) at dilution of 1:200 (under 10x lens). Heat mediated antigen retrieval with Tris-EDTA buffer (pH 9.0).



Immunohistochemical analysis of paraffin-embedded human breast cancer tissue slide using 28347-1-AP (EEA1 antibody) at dilution of 1:200 (under 40x lens). Heat mediated antigen retrieval with Tris-EDTA buffer (pH 9.0).