

For Research Use Only

MRPL39 Polyclonal antibody

Catalog Number: 28165-1-AP **3 Publications**



Basic Information

Catalog Number: 28165-1-AP	GenBank Accession Number: BC107719	Purification Method: Antigen affinity purification
Size: 150ul , Concentration: 450 ug/ml by Nanodrop and 267 ug/ml by Bradford method using BSA as the standard;	GeneID (NCBI): 54148	Recommended Dilutions: WB 1:1000-1:6000 IHC 1:50-1:500 IF/ICC 1:50-1:500
Source: Rabbit	UNIPROT ID: Q9NYK5	
Isotype: IgG	Full Name: mitochondrial ribosomal protein L39	
Immunogen Catalog Number: AG27154	Calculated MW: 338 aa, 39 kDa	
	Observed MW: 35-40 kDa	

Applications

Tested Applications: WB, IHC, IF/ICC, ELISA	Positive Controls: WB : HepG2 cells, mouse heart tissue, mouse testis tissue, rat testis tissue
Cited Applications: WB	IHC : human liver tissue,
Species Specificity: Human, Mouse, Rat	IF/ICC : HepG2 cells,
Cited Species: human	

Note-IHC: suggested antigen retrieval with TE buffer pH 9.0; (*) Alternatively, antigen retrieval may be performed with citrate buffer pH 6.0

Notable Publications

Author	Pubmed ID	Journal	Application
Xujun Liu	34728602	Signal Transduct Target Ther	WB
Shabnam Bakhshalizadeh	37148394	Hum Genet	WB
Sumudu S C Amarasekera	37133451	Hum Mol Genet	WB

Storage

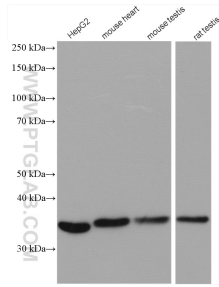
Storage:
Store at -20°C. Stable for one year after shipment.
Storage Buffer:
PBS with 0.02% sodium azide and 50% glycerol pH 7.3.
Aliquoting is unnecessary for -20°C storage

***** 20ul sizes contain 0.1%BSA**

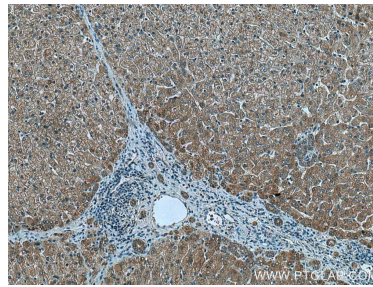
For technical support and original validation data for this product please contact:
T: 1 (888) 4PTGLAB (1-888-478-4522) (toll free in USA), or 1(312) 455-8498 (outside USA)
E: proteintech@ptglab.com
W: ptglab.com

This product is exclusively available under Proteintech Group brand and is not available to purchase from any other manufacturer.

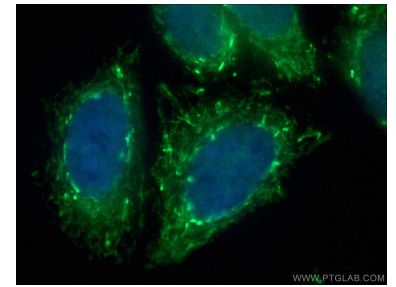
Selected Validation Data



Various lysates were subjected to SDS PAGE followed by western blot with 28165-1-AP (MRPL39 antibody) at dilution of 1:3000 incubated at room temperature for 1.5 hours.



Immunohistochemical analysis of paraffin-embedded human liver tissue slide using 28165-1-AP (MRPL39 antibody) at dilution of 1:200 (under 10x lens). Heat mediated antigen retrieval with Tris-EDTA buffer (pH 9.0).



Immunofluorescent analysis of (4% PFA) fixed HepG2 cells using 28165-1-AP (MRPL39 antibody) at dilution of 1:50 and Alexa Fluor 488-Conjugated AffiniPure Goat Anti-Rabbit IgG(H+L).