

For Research Use Only

# SLC25A46 Polyclonal antibody

Catalog Number: 27869-1-AP



## Basic Information

<b>Catalog Number:</b> 27869-1-AP	<b>GenBank Accession Number:</b> BC017169	<b>Purification Method:</b> Antigen affinity purification
<b>Size:</b> 150ul, Concentration: 550 ug/ml by Nanodrop and 300 ug/ml by Bradford method using BSA as the standard;	<b>GeneID (NCBI):</b> 91137	<b>Recommended Dilutions:</b> WB 1:200-1:1000 IHC 1:50-1:500 IF/ICC 1:50-1:500
<b>Source:</b> Rabbit	<b>UNIPROT ID:</b> Q96AG3	
<b>Isotype:</b> IgG	<b>Full Name:</b> solute carrier family 25, member 46	
<b>Immunogen Catalog Number:</b> AG27293	<b>Calculated MW:</b> 418 aa, 46 kDa	
	<b>Observed MW:</b> 46 kDa	

## Applications

**Tested Applications:**  
WB, IHC, IF/ICC, ELISA

**Species Specificity:**  
Human, mouse

**Note-IHC: suggested antigen retrieval with TE buffer pH 9.0; (\*) Alternatively, antigen retrieval may be performed with citrate buffer pH 6.0**

**Positive Controls:**

**WB:** mouse brain tissue,

**IHC:** human colon tissue, human medulloblastoma tissue

**IF/ICC:** NIH/3T3 cells,

## Background Information

Solute carrier family 25 member 46 (SLC25A46), a highly conserved protein among various species including vertebrates, is a nuclear gene encoding mitochondrial carriers. SLC25A46 is involved in mitochondrial fission and the transport of lipids from the endoplasmic reticulum to mitochondria (PMID: 33277645). SLC25A46 has 3 isoforms with molecular weights of 30, 37 and 46 kDa, respectively.

## Storage

**Storage:**

Store at -20°C. Stable for one year after shipment.

**Storage Buffer:**

PBS with 0.02% sodium azide and 50% glycerol pH 7.3.

Aliquoting is unnecessary for -20°C storage

**\*\*\* 20ul sizes contain 0.1% BSA**

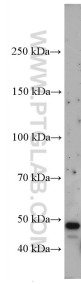
For technical support and original validation data for this product please contact:

T: 1 (888) 4PTGLAB (1-888-478-4522) (toll free in USA), or 1(312) 455-8498 (outside USA)

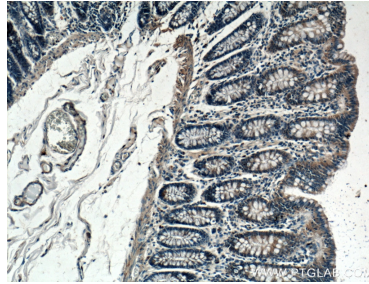
E: proteintech@ptglab.com  
W: ptglab.com

**This product is exclusively available under Proteintech Group brand and is not available to purchase from any other manufacturer.**

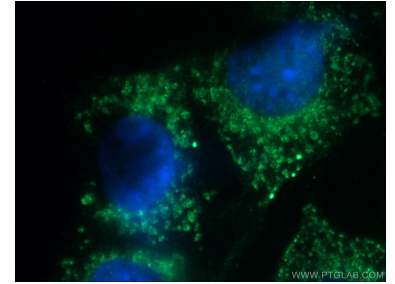
## Selected Validation Data



mouse brain tissue were subjected to SDS PAGE followed by western blot with 27869-1-AP (SLC25A46 antibody) at dilution of 1:300 incubated at room temperature for 1.5 hours.



Immunohistochemical analysis of paraffin-embedded human colon tissue slide using 27869-1-AP (SLC25A46 antibody) at dilution of 1:200 (under 10x lens).



Immunofluorescent analysis of (-20°C Ethanol) fixed NIH/3T3 cells using 27869-1-AP (SLC25A46 antibody) at dilution of 1:50 and Alexa Fluor 488-conjugated AffiniPure Goat Anti-Rabbit IgG(H+L).