

For Research Use Only

Titin Polyclonal antibody

Catalog Number: 27867-1-AP **4 Publications**



Basic Information

Catalog Number: 27867-1-AP	GenBank Accession Number: NM_001256850	Purification Method: Antigen affinity purification
Size: 150ul, Concentration: 700 µg/ml by Nanodrop;	GeneID (NCBI): 7273	Recommended Dilutions: IHC 1:200-1:800 IF-P 1:50-1:500 IF/ICC 1:200-1:800
Source: Rabbit	UNIPROT ID: Q8WZ42	
Isotype: IgG	Full Name: titin	
Immunogen Catalog Number: AG27496	Calculated MW: 3816 kDa	

Applications

Tested Applications: IHC, IF/ICC, IF-P, ELISA	Positive Controls: IHC : mouse heart tissue, mouse skeletal muscle tissue IF-P : mouse skeletal muscle tissue, mouse heart tissue IF/ICC : NIH/3T3 cells,
Cited Applications: IF	
Species Specificity: human, mouse	
Cited Species: human, mouse	
Note-IHC: suggested antigen retrieval with TE buffer pH 9.0; (*) Alternatively, antigen retrieval may be performed with citrate buffer pH 6.0	

Notable Publications

Author	Pubmed ID	Journal	Application
Jie Wang	34783308	Elife	IF
Sun-Ho Lee	34952434	Stem Cell Res	IF
Lynn George	38496572	Res Sq	IF

Storage

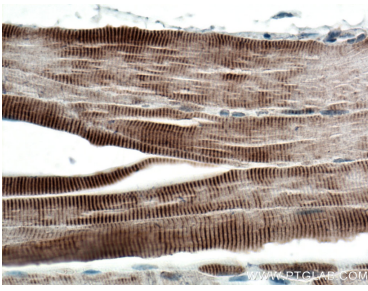
Storage:
Store at -20°C. Stable for one year after shipment.
Storage Buffer:
PBS with 0.02% sodium azide and 50% glycerol pH 7.3.
Aliquoting is unnecessary for -20°C storage

*** 20ul sizes contain 0.1% BSA

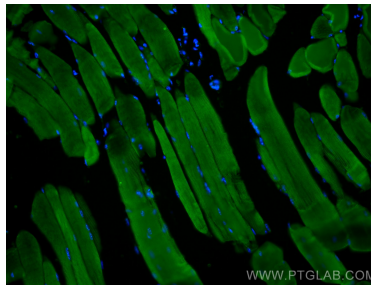
For technical support and original validation data for this product please contact:
T: 1 (888) 4PTGLAB (1-888-478-4522) (toll free in USA), or 1(312) 455-8498 (outside USA)
E: proteintech@ptglab.com
W: ptglab.com

This product is exclusively available under Proteintech Group brand and is not available to purchase from any other manufacturer.

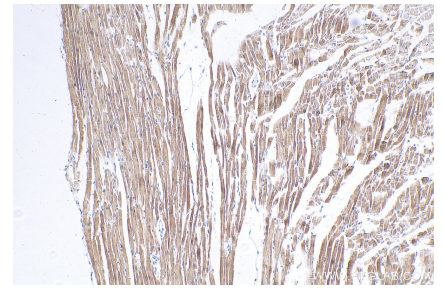
Selected Validation Data



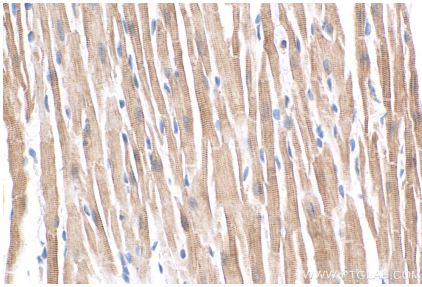
Immunohistochemical analysis of paraffin-embedded mouse skeletal muscle tissue slide using 27867-1-AP (Titin antibody) at dilution of 1:200 (under 40x lens). Heat mediated antigen retrieval with Tris-EDTA buffer (pH 9.0).



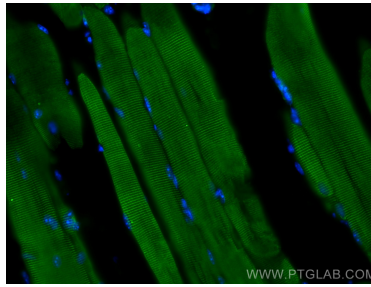
Immunofluorescent analysis of (4% PFA) fixed mouse skeletal muscle tissue using Titin antibody (27867-1-AP) at dilution of 1:200 and CoraLite®488-Conjugated AffiniPure Goat Anti-Rabbit IgG(H+L).



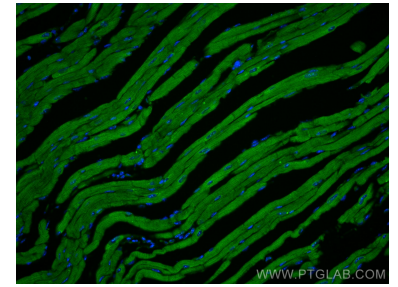
Immunohistochemical analysis of paraffin-embedded mouse heart tissue slide using 27867-1-AP (Titin antibody) at dilution of 1:400 (under 10x lens). Heat mediated antigen retrieval with Tris-EDTA buffer (pH 9.0).



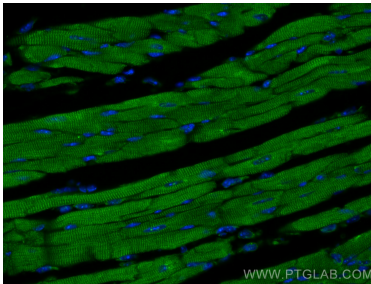
Immunohistochemical analysis of paraffin-embedded mouse heart tissue slide using 27867-1-AP (Titin antibody) at dilution of 1:400 (under 40x lens). Heat mediated antigen retrieval with Tris-EDTA buffer (pH 9.0).



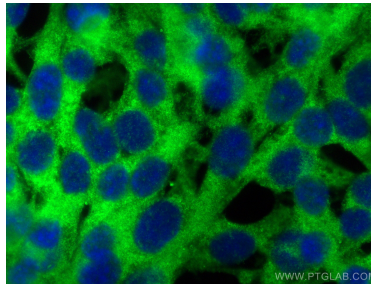
Immunofluorescent analysis of (4% PFA) fixed mouse skeletal muscle tissue using Titin antibody (27867-1-AP) at dilution of 1:200 and CoraLite®488-Conjugated AffiniPure Goat Anti-Rabbit IgG(H+L).



Immunofluorescent analysis of (4% PFA) fixed mouse heart tissue using Titin antibody (27867-1-AP) at dilution of 1:200 and CoraLite®488-Conjugated AffiniPure Goat Anti-Rabbit IgG(H+L).



Immunofluorescent analysis of (4% PFA) fixed mouse heart tissue using Titin antibody (27867-1-AP) at dilution of 1:200 and CoraLite®488-Conjugated AffiniPure Goat Anti-Rabbit IgG(H+L).



Immunofluorescent analysis of (-20°C Ethanol) fixed NIH/3T3 cells using Titin antibody (27867-1-AP) at dilution of 1:400 and CoraLite®488-Conjugated AffiniPure Goat Anti-Rabbit IgG(H+L).