

For Research Use Only

SMIM1 Polyclonal antibody

Catalog Number: 27849-1-AP

1 Publications



Basic Information

Catalog Number: 27849-1-AP	GenBank Accession Number: BC146957	Purification Method: Antigen affinity purification
Size: 150ul, Concentration: 800 µg/ml by Nanodrop and 433 µg/ml by Bradford method using BSA as the standard;	GeneID (NCBI): 388588	Recommended Dilutions: WB 1:1000-1:4000
Source: Rabbit	UNIPROT ID: B2RUZ4	
Isotype: IgG	Full Name: hypothetical LOC388588	
Immunogen Catalog Number: AG27028	Observed MW: 9 kDa	

Applications

Tested Applications: WB, ELISA	Positive Controls: WB : HEK-293 cells, mouse kidney tissue, mouse testis tissue
Cited Applications: WB	
Species Specificity: Human, Mouse	
Cited Species: human	

Background Information

Small integral membrane protein 1(SMIM1) is a type II transmembrane phosphoprotein and displays the Vel blood group antigen at its carboxyl-terminus. SMIM1 is highly expressed in hematopoietic cells. It is associated with a variety of immune responses and plays an important role in RBC differentiation. SMIM1 can be used as a potential biomarker for the diagnosis of IDD (PMID: 30906890; 26452714).

Notable Publications

Author	Pubmed ID	Journal	Application
Jiaxuan Yang	39021420	Transfus Med Hemother	WB

Storage

Storage:
Store at -20°C. Stable for one year after shipment.
Storage Buffer:
PBS with 0.02% sodium azide and 50% glycerol pH 7.3.
Aliquoting is unnecessary for -20°C storage

*** 20ul sizes contain 0.1% BSA

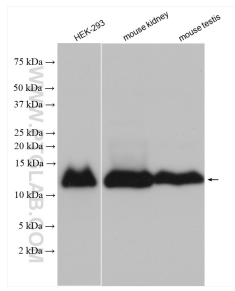
For technical support and original validation data for this product please contact:

T: 1 (888) 4PTGLAB (1-888-478-4522) (toll free in USA), or 1(312) 455-8498 (outside USA)

E: proteintech@ptglab.com
W: ptglab.com

This product is exclusively available under Proteintech Group brand and is not available to purchase from any other manufacturer.

Selected Validation Data



Various lysates were subjected to SDS PAGE followed by western blot with 27849-1-AP (SMIM1 antibody) at dilution of 1:2000 incubated at room temperature for 1.5 hours.