

For Research Use Only

SEMA3A Polyclonal antibody

Catalog Number: 27836-1-AP **4 Publications**



Basic Information

Catalog Number: 27836-1-AP	GenBank Accession Number: BC111416	Purification Method: Antigen affinity purification
Size: 150ul, Concentration: 900 µg/ml by Nanodrop and 500 µg/ml by Bradford method using BSA as the standard;	GeneID (NCBI): 10371	Recommended Dilutions: WB 1:500-1:1000 IF/ICC 1:200-1:800
Source: Rabbit	UNIPROT ID: Q14563	
Isotype: IgG	Full Name: sema domain, immunoglobulin domain (Ig), short basic domain, secreted, (semaphorin) 3A	
Immunogen Catalog Number: AG27173	Calculated MW: 771 aa, 89 kDa	
	Observed MW: 89 and 65 kDa	

Applications

Tested Applications: WB, IF, ELISA	Positive Controls: WB : PC-12 cells, SH-SY5Y cells
Cited Applications: WB	IF/ICC : HeLa cells,
Species Specificity: Human	
Cited Species: human, rat	

Background Information

SEMA3A (Semaphorin 3A), a class-3 semaphorin signaling protein, is involved in cell signaling with PlexinA1 and Neuropilin-1 (NRP1) receptors and it is responsible for recruiting dendritic cells into lymphatics. It's widely expressed in different tissues (PMID:10766232). SEMA3A has been shown to exert osteoprotective effects, characterized by increasing bone formation while inhibiting the activation of osteoclast precursor cells (PMID:36598593). However, SEMA3A also modulates the immune system. SEMA3A expression in a myocardial infarct area enhances macrophage polarization and inhibits monocyte migration into the lesion area (PMID:28540528).

Notable Publications

Author	Pubmed ID	Journal	Application
Xiaochi Chang	35037251	J Periodontal Res	WB
Xianbin Wang	38373630	Neurosci Lett	WB
Jin Wu	37516879	J Orthop Surg Res	WB

Storage

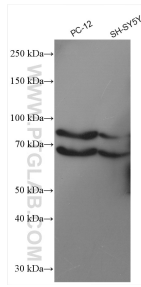
Storage:
Store at -20°C. Stable for one year after shipment.
Storage Buffer:
PBS with 0.02% sodium azide and 50% glycerol pH 7.3.
Aliquoting is unnecessary for -20°C storage

*** 20ul sizes contain 0.1% BSA

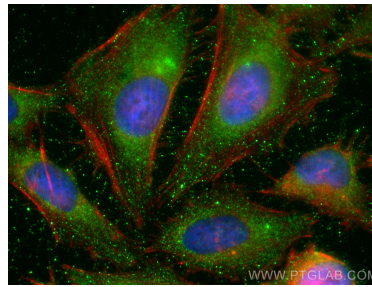
For technical support and original validation data for this product please contact:
T: 1 (888) 4PTGLAB (1-888-478-4522) (toll free in USA), or 1(312) 455-8498 (outside USA)
E: proteintech@ptglab.com
W: ptglab.com

This product is exclusively available under Proteintech Group brand and is not available to purchase from any other manufacturer.

Selected Validation Data



Various lysates were subjected to SDS PAGE followed by western blot with 27836-1-AP (SEMA3A antibody) at dilution of 1:600 incubated at room temperature for 1.5 hours.



Immunofluorescent analysis of (-20°C Ethanol) fixed HeLa cells using SEMA3A antibody (27836-1-AP) at dilution of 1:400 and CoraLite® 488-Conjugated AffiniPure Goat Anti-Rabbit IgG(H+L), CL594-phalloidin (red).