

For Research Use Only

MTSS1L Polyclonal antibody

Catalog Number: 27832-1-AP **2 Publications**



Basic Information

Catalog Number:

27832-1-AP

Size:

150ul, Concentration: 350 µg/ml by Nanodrop and 200 µg/ml by Bradford method using BSA as the standard;

Source:

Rabbit

Isotype:

IgG

Immunogen Catalog Number:

AG27216

GenBank Accession Number:

BC002770

GeneID (NCBI):

92154

UNIPROT ID:

Q765P7

Full Name:

metastasis suppressor 1-like

Observed MW:

68-70 kDa

Purification Method:

Antigen affinity purification

Recommended Dilutions:

WB 1:2000-1:10000

IP 0.5-4.0 µg for 1.0-3.0 mg of total protein lysate

IHC 1:50-1:500

IF/ICC 1:50-1:500

Applications

Tested Applications:

WB, IP, IF, IHC, ELISA

Cited Applications:

WB

Species Specificity:

Human, mouse, rat

Cited Species:

human

Note-IHC: suggested antigen retrieval with TE buffer pH 9.0; (*) Alternatively, antigen retrieval may be performed with citrate buffer pH 6.0

Positive Controls:

WB : HEK-293T cells, HeLa cells, Jurkat cells, U-251 cells, NIH/3T3 cells, mouse brain tissue, rat brain tissue

IP : Jurkat cells,

IHC : mouse brain tissue,

IF/ICC : MCF-7 cells,

Notable Publications

Author	Pubmed ID	Journal	Application
Wei Zhuo	35597784	Cell Discov	WB
Xiaoli Tang	31281935	Acta Biochim Biophys Sin (Shanghai)	WB

Storage

Storage:

Store at -20°C. Stable for one year after shipment.

Storage Buffer:

PBS with 0.02% sodium azide and 50% glycerol pH 7.3.

Aliquoting is unnecessary for -20°C storage

*** 20ul sizes contain 0.1% BSA

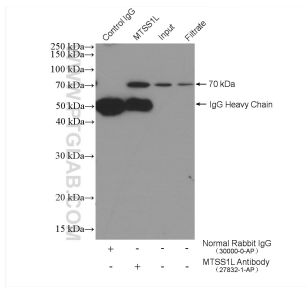
For technical support and original validation data for this product please contact:

T: 1 (888) 4PTGLAB (1-888-478-4522) (toll free in USA), or 1(312) 455-8498 (outside USA)

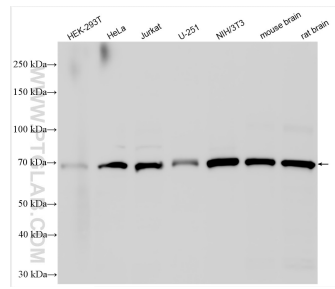
E: proteintech@ptglab.com
W: ptglab.com

This product is exclusively available under Proteintech Group brand and is not available to purchase from any other manufacturer.

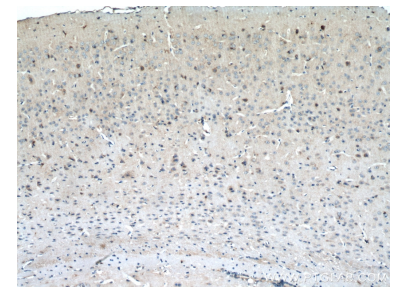
Selected Validation Data



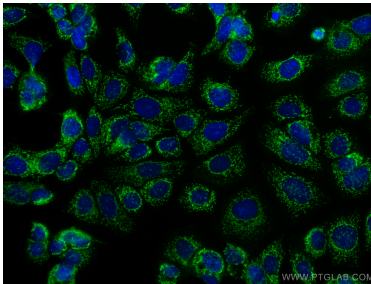
IP result of anti-MTSS1L (IP:27832-1-AP, 4ug; Detection:27832-1-AP 1:300) with Jurkat cells lysate 4000 ug.



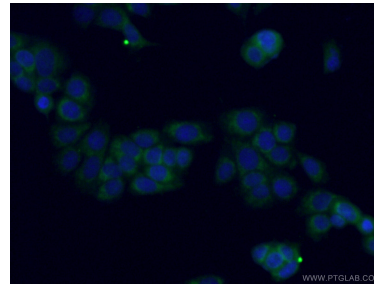
Various lysates were subjected to SDS PAGE followed by western blot with 27832-1-AP (MTSS1L antibody) at dilution of 1:5000 incubated at room temperature for 1.5 hours.



Immunohistochemical analysis of paraffin-embedded mouse brain tissue slide using 27832-1-AP (MTSS1L antibody) at dilution of 1:200 (under 10x lens. Heat mediated antigen retrieval with Tris-EDTA buffer (pH 9.0).



Immunofluorescent analysis of (-20°C Methanol) fixed MCF-7 cells using MTSS1L antibody (27832-1-AP) at dilution of 1:200 and CoraLite®488-Conjugated AffiniPure Goat Anti-Rabbit IgG(H+L).



Immunofluorescent analysis of (-20°C Ethanol) fixed MCF-7 cells using 27832-1-AP (MTSS1L antibody) at dilution of 1:50 and Alexa Fluor 488-Conjugated AffiniPure Goat Anti-Rabbit IgG(H+L).