

For Research Use Only

PPP4R1 Polyclonal antibody

Catalog Number: 27805-1-AP

Featured Product

2 Publications



Basic Information

Catalog Number:

27805-1-AP

Size:

150ul, Concentration: 700 µg/ml by Nanodrop and 400 µg/ml by Bradford method using BSA as the standard;

Source:

Rabbit

Isotype:

IgG

Immunogen Catalog Number:

AG26405

GenBank Accession Number:

BC060829

GeneID (NCBI):

9989

UNIPROT ID:

Q8TF05

Full Name:

protein phosphatase 4, regulatory subunit 1

Calculated MW:

107 kDa

Observed MW:

120-130 kDa

Purification Method:

Antigen affinity purification

Recommended Dilutions:

WB 1:2000-1:16000

IP 0.5-4.0 ug for 1.0-3.0 mg of total protein lysate

IHC 1:50-1:500

Applications

Tested Applications:

WB, IP, IHC, ELISA

Cited Applications:

WB, IP, IF, IHC

Species Specificity:

Human

Cited Species:

human

Note-IHC: suggested antigen retrieval with *TE buffer pH 9.0*; (*) Alternatively, antigen retrieval may be performed with *citrate buffer pH 6.0*

Positive Controls:

WB : HEK-293T cells, HeLa cells, HEK-293 cells, A431 cells

IP : HEK-293T cells,

IHC : human liver cancer tissue,

Notable Publications

Author	Pubmed ID	Journal	Application
Weimin Xu	38424148	Cell Death Differ	WB,IP
Zhiqiang He	38301910	Cancer Lett	WB,IHC,IF,IP

Storage

Storage:

Store at -20°C. Stable for one year after shipment.

Storage Buffer:

PBS with 0.02% sodium azide and 50% glycerol pH 7.3.

Aliquoting is unnecessary for -20°C storage

*** 20ul sizes contain 0.1%BSA

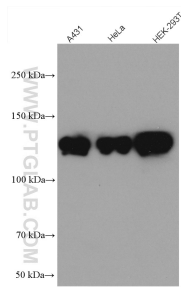
For technical support and original validation data for this product please contact:

T: 1 (888) 4PTGLAB (1-888-478-4522) (toll free in USA), or 1(312) 455-8498 (outside USA)

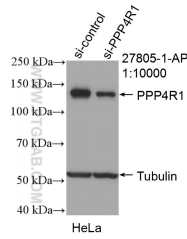
E: proteintech@ptglab.com
W: ptglab.com

This product is exclusively available under Proteintech Group brand and is not available to purchase from any other manufacturer.

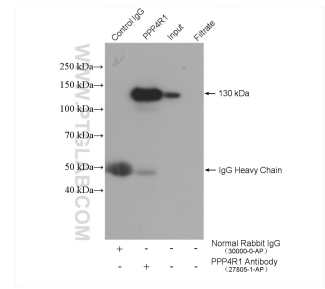
Selected Validation Data



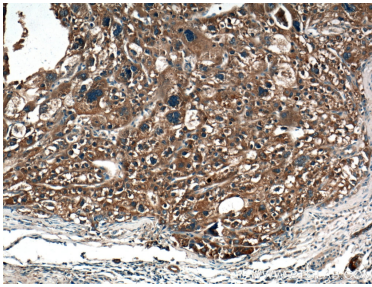
Various lysates were subjected to SDS PAGE followed by western blot with 27805-1-AP (PPP4R1 antibody) at dilution of 1:8000 incubated at room temperature for 1.5 hours.



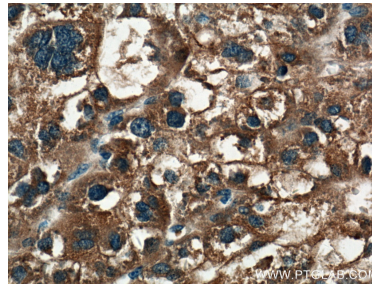
WB result of PPP4R1 antibody (27805-1-AP; 1:10000; incubated at room temperature for 1.5 hours) with sh-Control and sh-PPP4R1 transfected HeLa cells.



IP result of anti-PPP4R1 (IP:27805-1-AP, 4ug; Detection:27805-1-AP 1:2000) with HEK-293T cells lysate 4000 ug.



Immunohistochemical analysis of paraffin-embedded human liver cancer tissue slide using 27805-1-AP (PPP4R1 antibody) at dilution of 1:200 (under 10x lens).



Immunohistochemical analysis of paraffin-embedded human liver cancer tissue slide using 27805-1-AP (PPP4R1 antibody) at dilution of 1:200 (under 40x lens).