

For Research Use Only

SF3B1 Polyclonal antibody

Catalog Number: 27684-1-AP

Featured Product

5 Publications



Basic Information

Catalog Number: 27684-1-AP	GenBank Accession Number: NM_012433	Purification Method: Antigen affinity purification
Size: 150ul, Concentration: 1000 ug/ml by Nanodrop and 467 ug/ml by Bradford method using BSA as the standard;	GeneID (NCBI): 23451	Recommended Dilutions: WB 1:1000-1:6000 IHC 1:500-1:2000
Source: Rabbit	UNIPROT ID: O75533	
Isotype: IgG	Full Name: splicing factor 3b, subunit 1, 155kDa	
Immunogen Catalog Number: AG26689	Calculated MW: 146 kDa	
	Observed MW: 146-150 kDa	

Applications

Tested Applications: WB, IHC, ELISA	Positive Controls: WB : MCF-7 cells, HeLa cells, U2OS cells IHC : human colon tissue,
Cited Applications: WB	
Species Specificity: Human	
Cited Species: human	

Note-IHC: suggested antigen retrieval with TE buffer pH 9.0; (*) Alternatively, antigen retrieval may be performed with citrate buffer pH 6.0

Background Information

SF3B1, also named as SAP155, is a 1304 amino acid protein, which belongs to the SF3B1 family. SF3B1 is a subunit of the splicing factor SF3B required for 'A' complex assembly formed by the stable binding of U2 snRNP to the branchpoint sequence (BPS) in pre-mRNA. Sequence independent binding of SF3A/SF3B complex upstream of the branch site is essential, it may anchor U2 snRNP to the pre-mRNA. SF3B1 may also be involved in the assembly of the 'E' complex. SF3B1 belongs also to the minor U12-dependent spliceosome, which is involved in the splicing of rare class of nuclear pre-mRNA intron.

Notable Publications

Author	Pubmed ID	Journal	Application
Zixiang Wang	36271053	Nat Commun	WB
Yapu Li	33319461	EMBO Rep	WB
Tetsuro Ochi	36028755	Sci Rep	WB

Storage

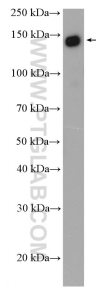
Storage:
Store at -20°C. Stable for one year after shipment.
Storage Buffer:
PBS with 0.02% sodium azide and 50% glycerol pH 7.3.
Aliquoting is unnecessary for -20°C storage

*** 20ul sizes contain 0.1% BSA

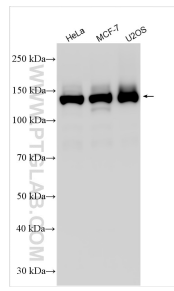
For technical support and original validation data for this product please contact:
T: 1 (888) 4PTGLAB (1-888-478-4522) (toll free in USA), or 1(312) 455-8498 (outside USA)
E: proteintech@ptglab.com
W: ptglab.com

This product is exclusively available under Proteintech Group brand and is not available to purchase from any other manufacturer.

Selected Validation Data



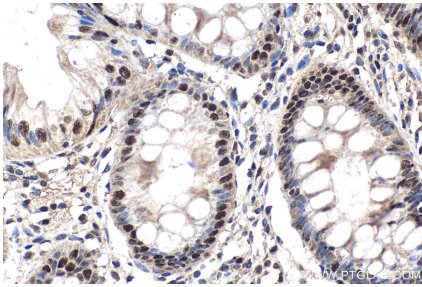
MCF-7 cells were subjected to SDS PAGE followed by western blot with 27684-1-AP (SF3B1 antibody) at dilution of 1:3000 incubated at room temperature for 1.5 hours.



Various lysates were subjected to SDS PAGE followed by western blot with 27684-1-AP (SF3B1 antibody) at dilution of 1:10000 incubated at room temperature for 1.5 hours.



Immunohistochemical analysis of paraffin-embedded human colon tissue slide using 27684-1-AP (SF3B1 antibody) at dilution of 1:1000 (under 10x lens). Heat mediated antigen retrieval with Tris-EDTA buffer (pH 9.0).



Immunohistochemical analysis of paraffin-embedded human colon tissue slide using 27684-1-AP (SF3B1 antibody) at dilution of 1:1000 (under 40x lens). Heat mediated antigen retrieval with Tris-EDTA buffer (pH 9.0).