

For Research Use Only

KDEL3 Polyclonal antibody

Catalog Number: 27632-1-AP **3 Publications**



Basic Information

Catalog Number: 27632-1-AP	GenBank Accession Number: BC001277	Purification Method: Antigen affinity purification
Size: 150ul, Concentration: 350 µg/ml by Nanodrop and 267 µg/ml by Bradford method using BSA as the standard;	GeneID (NCBI): 11015	Recommended Dilutions: WB 1:500-1:2000
Source: Rabbit	UNIPROT ID: O43731	
Isotype: IgG	Full Name: KDEL (Lys-Asp-Glu-Leu) endoplasmic reticulum protein retention receptor 3	
Immunogen Catalog Number: AG26496	Calculated MW: 214 aa, 25 kDa	
	Observed MW: 28 kDa	

Applications

Tested Applications: WB, ELISA	Positive Controls: WB : NIH/3T3 cells,
Cited Applications: WB	
Species Specificity: Human, Mouse	
Cited Species: human, zebrafish	

Notable Publications

Author	Pubmed ID	Journal	Application
Nunziata Maio	30765471	Haematologica	WB
Zezhong Mou	33424916	Front Genet	WB
Jian Yuan	39112444	Nat Commun	WB

Storage

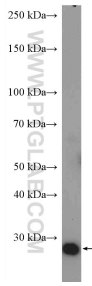
Storage:
Store at -20°C. Stable for one year after shipment.
Storage Buffer:
PBS with 0.02% sodium azide and 50% glycerol pH 7.3.
Aliquoting is unnecessary for -20°C storage

***** 20ul sizes contain 0.1% BSA**

For technical support and original validation data for this product please contact:
T: 1 (888) 4PTGLAB (1-888-478-4522) (toll free in USA), or 1(312) 455-8498 (outside USA) E: proteintech@ptglab.com W: ptglab.com

This product is exclusively available under Proteintech Group brand and is not available to purchase from any other manufacturer.

Selected Validation Data



NIH/3T3 cells were subjected to SDS PAGE followed by western blot with 27632-1-AP (KDEL3 antibody) at dilution of 1:1000 incubated at room temperature for 1.5 hours.