

For Research Use Only

RanBP2 Polyclonal antibody

Catalog Number: 27606-1-AP

Featured Product

3 Publications



Basic Information

Catalog Number: 27606-1-AP	GenBank Accession Number: NM_006267	Purification Method: Antigen affinity purification
Size: 150ul, Concentration: 1000 µg/ml by Nanodrop and 467 µg/ml by Bradford method using BSA as the standard;	GeneID (NCBI): 5903	Recommended Dilutions: WB 1:500-1:2000 IHC 1:500-1:2000
Source: Rabbit	UNIPROT ID: P49792	
Isotype: IgG	Full Name: RAN binding protein 2	
Immunogen Catalog Number: AG26370	Calculated MW: 358 kDa	
	Observed MW: 358 kDa	

Applications

Tested Applications: WB, IHC, ELISA	Positive Controls: WB : HeLa cells, IHC : rat liver tissue, mouse kidney tissue
Cited Applications: WB, IHC	
Species Specificity: Human, mouse, rat	
Cited Species: human	

Note-IHC: suggested antigen retrieval with TE buffer pH 9.0; (*) Alternatively, antigen retrieval may be performed with citrate buffer pH 6.0

Background Information

RanBP2 (Ran-binding protein 2) is also named as p270 and NUP358, and belongs to the RanBP2 E3 ligase family. RanBP2 is E3 SUMO-protein ligase which facilitates SUMO1 and SUMO2 conjugation by UBE2I (PMID:11792325, PMID:22194619). RanBP2 involved in transport factor (Ran-GTP, karyopherin)-mediated protein import via the F-G repeat-containing domain which acts as a docking site for substrates (PMID:7775481). It is component of the nuclear export pathway (PMID:10078529). RanBP2 recruits BICD2 to the nuclear envelope and cytoplasmic stacks of nuclear pore complex known as annulate lamellae during G2 phase of cell cycle (PMID:20386726).

Notable Publications

Author	Pubmed ID	Journal	Application
Haocheng Wang	33816306	Front Oncol	WB,IHC
Fani Panagaki	39036650	Nat Phys	WB
Jibin Sadasivan	36898623	J Mol Biol	WB

Storage

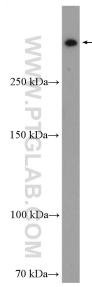
Storage:
Store at -20°C. Stable for one year after shipment.
Storage Buffer:
PBS with 0.02% sodium azide and 50% glycerol pH 7.3.
Aliquoting is unnecessary for -20°C storage

*** 20ul sizes contain 0.1% BSA

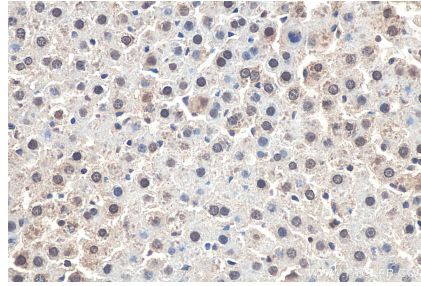
For technical support and original validation data for this product please contact:
T: 1 (888) 4PTGLAB (1-888-478-4522) (toll free in USA), or 1(312) 455-8498 (outside USA)
E: proteintech@ptglab.com
W: ptglab.com

This product is exclusively available under Proteintech Group brand and is not available to purchase from any other manufacturer.

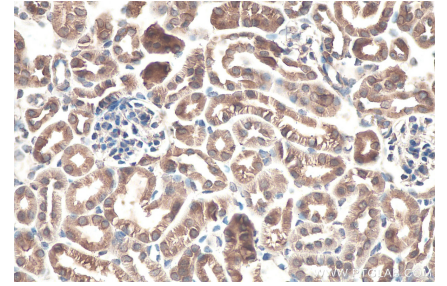
Selected Validation Data



HeLa cells were subjected to SDS PAGE followed by western blot with 27606-1-AP (RanBP2 antibody) at dilution of 1:1000 incubated at room temperature for 1.5 hours.



Immunohistochemical analysis of paraffin-embedded rat liver tissue slide using 27606-1-AP (RanBP2 antibody) at dilution of 1:1000 (under 40x lens). Heat mediated antigen retrieval with Tris-EDTA buffer (pH 9.0).



Immunohistochemical analysis of paraffin-embedded mouse kidney tissue slide using 27606-1-AP (RanBP2 antibody) at dilution of 1:1000 (under 40x lens). Heat mediated antigen retrieval with Tris-EDTA buffer (pH 9.0).