

For Research Use Only

# EMC7/C15orf24 Polyclonal antibody



Catalog Number: 27550-1-AP

3 Publications

## Basic Information

**Catalog Number:**

27550-1-AP

**Size:**

150ul, Concentration: 650 µg/ml by Nanodrop and 333 µg/ml by Bradford method using BSA as the standard;

**Source:**

Rabbit

**Isotype:**

IgG

**Immunogen Catalog Number:**

AG26784

**GenBank Accession Number:**

BC104934

**GeneID (NCBI):**

56851

**UNIPROT ID:**

Q9NPA0

**Full Name:**

chromosome 15 open reading frame

24

**Observed MW:**

20-26 kDa

**Purification Method:**

Antigen affinity purification

**Recommended Dilutions:**

WB 1:1000-1:6000

## Applications

**Tested Applications:**

WB, ELISA

**Cited Applications:**

WB

**Species Specificity:**

Human

**Cited Species:**

human

**Positive Controls:**

WB : HeLa cells, HepG2 cells

## Background Information

The mammalian ER membrane complex (EMC) is composed of 10 subunits, EMC 1-10. Endoplasmic reticulum membrane protein complex subunit 7(EMC7, also named C15orf24) is part of the endoplasmic reticulum membrane protein complex (EMC) that enables the energy-independent insertion into endoplasmic reticulum membranes of newly synthesized membrane proteins.

## Notable Publications

Author	Pubmed ID	Journal	Application
John P O'Donnell	32459176	Elife	WB
Katharine R Page	38076791	bioRxiv	WB
Tino Pleiner	37199759	J Cell Biol	WB

## Storage

**Storage:**

Store at -20°C. Stable for one year after shipment.

**Storage Buffer:**

PBS with 0.02% sodium azide and 50% glycerol pH 7.3.

Aliquoting is unnecessary for -20°C storage

\*\*\* 20ul sizes contain 0.1% BSA

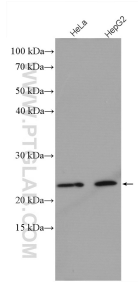
For technical support and original validation data for this product please contact:

T: 1 (888) 4PTGLAB (1-888-478-4522) (toll free in USA), or 1(312) 455-8498 (outside USA)

E: [proteintech@ptglab.com](mailto:proteintech@ptglab.com)  
W: [ptglab.com](http://ptglab.com)

This product is exclusively available under Proteintech Group brand and is not available to purchase from any other manufacturer.

## Selected Validation Data



Various lysates were subjected to SDS PAGE followed by western blot with 27550-1-AP (C15orf24 antibody) at dilution of 1:3000 incubated at room temperature for 1.5 hours.