

For Research Use Only

# SLC31A1 Polyclonal antibody

Catalog Number: 27499-1-AP

Featured Product

2 Publications



## Basic Information

**Catalog Number:**

27499-1-AP

**Size:**

150ul, Concentration: 550 µg/ml by Nanodrop;

**Source:**

Rabbit

**Isotype:**

IgG

**Immunogen Catalog Number:**

AG26601

**GenBank Accession Number:**

BC013611

**GeneID (NCBI):**

1317

**UNIPROT ID:**

O15431

**Full Name:**

solute carrier family 31 (copper transporters), member 1

**Calculated MW:**

21 kDa

**Observed MW:**

21-25,30-35,60-70 kDa

**Purification Method:**

Antigen affinity purification

**Recommended Dilutions:**

WB 1:500-1:1000

IF 1:50-1:500

## Applications

**Tested Applications:**

WB, IF, ELISA

**Cited Applications:**

WB

**Species Specificity:**

Human, mouse

**Cited Species:**

human

**Positive Controls:**

WB : HT-29 cells, Caco-2 cells, HeLa cells

IF : human liver cancer tissue,

## Notable Publications

Author	Pubmed ID	Journal	Application
Hong Yang	36293101	Int J Mol Sci	WB
Trace M Jones	36860653	Cancer Res Commun	WB

## Storage

**Storage:**

Store at -20°C. Stable for one year after shipment.

**Storage Buffer:**

PBS with 0.02% sodium azide and 50% glycerol pH 7.3.

Aliquoting is unnecessary for -20°C storage

\*\*\* 20ul sizes contain 0.1% BSA

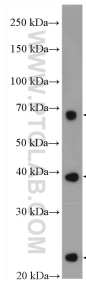
For technical support and original validation data for this product please contact:

T: 1 (888) 4PTGLAB (1-888-478-4522) (toll free in USA), or 1(312) 455-8498 (outside USA)

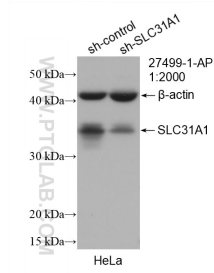
E: [proteintech@ptglab.com](mailto:proteintech@ptglab.com)  
W: [ptglab.com](http://ptglab.com)

This product is exclusively available under Proteintech Group brand and is not available to purchase from any other manufacturer.

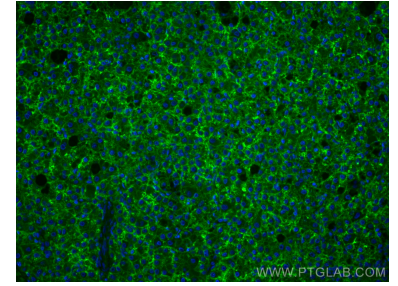
## Selected Validation Data



HT-29 cells were subjected to SDS PAGE followed by western blot with 27499-1-AP (SLC31A1 antibody) at dilution of 1:500 incubated at room temperature for 1.5 hours.



WB result of SLC31A1 antibody (27499-1-AP; 1:2000; incubated at room temperature for 1.5 hours) with sh-Control and sh-SLC31A1 transfected HeLa cells.



Immunofluorescent analysis of (4% PFA) fixed human liver cancer tissue using SLC31A1 antibody (27499-1-AP) at dilution of 1:200 and CoraLite®488-Conjugated AffiniPure Goat Anti-Rabbit IgG(H+L).