

For Research Use Only

# NDNL2 Polyclonal antibody

Catalog Number: 27488-1-AP **1 Publications**



## Basic Information

<b>Catalog Number:</b> 27488-1-AP	<b>GenBank Accession Number:</b> BC053999	<b>Purification Method:</b> Antigen affinity purification
<b>Size:</b> 150ul , Concentration: 230 µg/ml by Nanodrop and 200 µg/ml by Bradford method using BSA as the standard;	<b>GeneID (NCBI):</b> 56160	<b>Recommended Dilutions:</b> WB 1:500-1:2000 IHC 1:50-1:500 IF 1:50-1:500
<b>Source:</b> Rabbit	<b>Full Name:</b> necdin-like 2	
<b>Isotype:</b> IgG	<b>Calculated MW:</b> 34 kDa	
<b>Immunogen Catalog Number:</b> AG26663	<b>Observed MW:</b> 38 kDa	

## Applications

<b>Tested Applications:</b> IF, IHC, WB, ELISA	<b>Positive Controls:</b> WB : HepG2 cells, L02 cells, HeLa cells, human placenta tissue
<b>Cited Applications:</b> WB	IHC : human liver cancer tissue,
<b>Species Specificity:</b> Human	IF : HepG2 cells,
<b>Cited Species:</b> human	

**Note-IHC: suggested antigen retrieval with TE buffer pH 9.0; (\*) Alternatively, antigen retrieval may be performed with citrate buffer pH 6.0**

## Background Information

NDNL2 (also known as NSMCE3 or MAGEG1) is a part of the SMC5-6 protein complex that is essential for DNA damage response and chromosome segregation (PMID: 18086888; 27427983). The gene of human NDNL2 maps to chromosome 15q13.1. Northern blot analysis detected expression of a 1.9-kb transcript in all human tissues tested, with highest expression in testis (PMID: 11782285). Missense mutations in NSMCE3 have been associated with an autosomal recessive chromosome breakage syndrome that leads to defective T and B cell function and acute respiratory distress syndrome in early childhood (PMID: 27427983).

## Notable Publications

Author	Pubmed ID	Journal	Application
Stephanie Pei Tung Yiu	35263599	Cell Rep	WB

## Storage

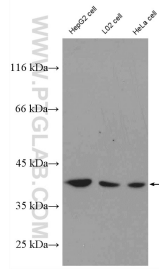
**Storage:**  
Store at -20°C. Stable for one year after shipment.  
**Storage Buffer:**  
PBS with 0.02% sodium azide and 50% glycerol pH 7.3.  
Aliquoting is unnecessary for -20°C storage

\*\*\* 20ul sizes contain 0.1% BSA

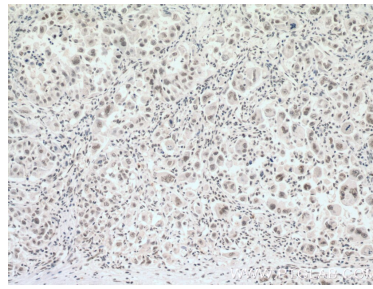
For technical support and original validation data for this product please contact:  
T: 1 (888) 4PTGLAB (1-888-478-4522) (toll free in USA), or 1(312) 455-8498 (outside USA)  
E: proteintech@ptglab.com  
W: ptglab.com

This product is exclusively available under Proteintech Group brand and is not available to purchase from any other manufacturer.

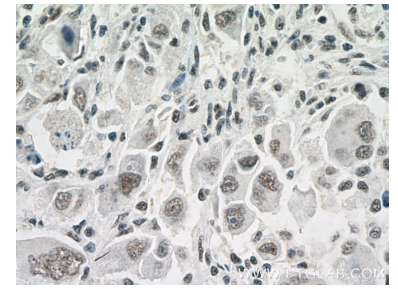
## Selected Validation Data



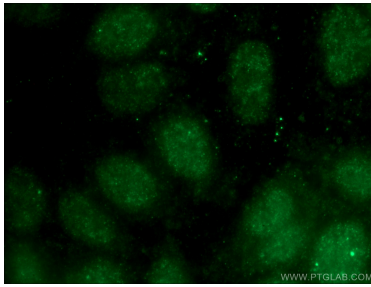
HepG2, L02 and HeLa cells were subjected to SDS PAGE followed by western blot with 27488-1-AP (NDNL2 antibody) at dilution of 1:1000 incubated at room temperature for 1.5 hours.



Immunohistochemical analysis of paraffin-embedded human liver cancer tissue slide using 27488-1-AP (NDNL2 antibody) at dilution of 1:100 (under 10x lens. Heat mediated antigen retrieval with Tris-EDTA buffer (pH 9.0)).



Immunohistochemical analysis of paraffin-embedded human liver cancer tissue slide using 27488-1-AP (NDNL2 antibody) at dilution of 1:100 (under 40x lens. Heat mediated antigen retrieval with Tris-EDTA buffer (pH 9.0)).



Immunofluorescent analysis of (-20°C Ethanol) fixed HepG2 cells using 27488-1-AP (NDNL2 antibody) at dilution of 1:50 and Alexa Fluor 488-conjugated AffiniPure Goat Anti-Rabbit IgG(H+L).