

For Research Use Only

MRPL4 Polyclonal antibody

Catalog Number: 27484-1-AP

Featured Product

4 Publications



Basic Information

Catalog Number: 27484-1-AP	GenBank Accession Number: BC000756	Purification Method: Antigen affinity purification
Size: 150ul, Concentration: 267 µg/ml by Nanodrop and 267 µg/ml by Bradford method using BSA as the standard;	GeneID (NCBI): 51073	Recommended Dilutions: WB 1:10000-1:40000 IHC 1:50-1:500 IF 1:50-1:500
Source: Rabbit	Full Name: mitochondrial ribosomal protein L4	
Isotype: IgG	Calculated MW: 35 kDa	
Immunogen Catalog Number: AG26568	Observed MW: 36 kDa	

Applications

Tested Applications: IF, IHC, WB, ELISA	Positive Controls: WB : HL-60 cells, IHC : human liver tissue, IF : HepG2 cells,
Cited Applications: WB	
Species Specificity: Human	
Cited Species: human	
Note-IHC: suggested antigen retrieval with TE buffer pH 9.0; (*) Alternatively, antigen retrieval may be performed with citrate buffer pH 6.0	

Background Information

Notable Publications

Author	Pubmed ID	Journal	Application
Elizabeth A Perry	33462515	Nat Metab	WB
Damien Jeandard	36537202	Nucleic Acids Res	WB
Conor T Ronayne	37818824	EMBO Rep	WB

Storage

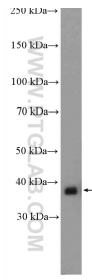
Storage:
Store at -20°C. Stable for one year after shipment.
Storage Buffer:
PBS with 0.02% sodium azide and 50% glycerol pH 7.3.
Aliquoting is unnecessary for -20°C storage

*** 20ul sizes contain 0.1% BSA

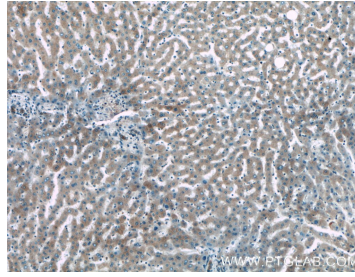
For technical support and original validation data for this product please contact:
T: 1 (888) 4PTGLAB (1-888-478-4522) (toll free in USA), or 1(312) 455-8498 (outside USA)
E: proteintech@ptglab.com
W: ptglab.com

This product is exclusively available under Proteintech Group brand and is not available to purchase from any other manufacturer.

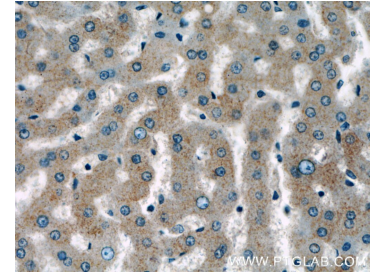
Selected Validation Data



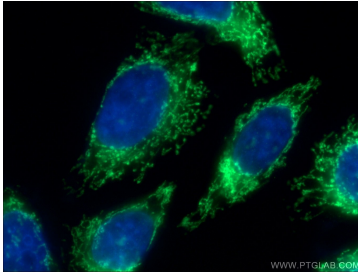
HL-60 cells were subjected to SDS PAGE followed by western blot with 27484-1-AP (MRPL4 antibody) at dilution of 1:20000 incubated at room temperature for 1.5 hours.



Immunohistochemical analysis of paraffin-embedded human liver tissue slide using 27484-1-AP (MRPL4 antibody) at dilution of 1:200 (under 10x lens).



Immunohistochemical analysis of paraffin-embedded human liver tissue slide using 27484-1-AP (MRPL4 antibody) at dilution of 1:200 (under 40x lens).



Immunofluorescent analysis of (4% PFA) fixed HepG2 cells using 27484-1-AP (MRPL4 antibody) at dilution of 1:50 and Alexa Fluor 488-conjugated AffiniPure Goat Anti-Rabbit IgG(H+L).