

For Research Use Only

SEMA4A Polyclonal antibody

Catalog Number: 27359-1-AP

Featured Product

2 Publications



Basic Information

Catalog Number:

27359-1-AP

Size:

150ul, Concentration: 400 ug/ml by Nanodrop and 333 ug/ml by Bradford method using BSA as the standard;

Source:

Rabbit

Isotype:

IgG

Immunogen Catalog Number:

AG26023

GenBank Accession Number:

BC020974

GeneID (NCBI):

64218

UNIPROT ID:

Q9H3S1

Full Name:

sema domain, immunoglobulin domain (Ig), transmembrane domain (TM) and short cytoplasmic domain, (semaphorin) 4A

Calculated MW:

761 aa, 84 kDa

Observed MW:

120-150 kDa

Purification Method:

Antigen affinity purification

Recommended Dilutions:

WB 1:500-1:2000

IHC 1:50-1:500

Applications

Tested Applications:

WB, IHC, ELISA

Cited Applications:

WB, IHC

Species Specificity:

human

Cited Species:

human

Positive Controls:

WB: HeLa cells, PC-3 cells

IHC: human breast cancer tissue, human placenta tissue

Note-IHC: suggested antigen retrieval with TE buffer pH 9.0; (*) Alternatively, antigen retrieval may be performed with citrate buffer pH 6.0

Background Information

Sema4A, the membrane-bound class 4 semaphorin, belongs to semaphorins superfamily. Sema4A functions as potent axonal repellants in the nervous system, and is involved in vascular development. Two species of Sema4A with molecular weights of about 150 and 120 kDa were observed. The antibody recognizes the Sema4A protein, which is of appropriate molecular size (~120 kDa) for the glycosylated protein (PMID: 26296689/17318185/26024919).

Notable Publications

Author	Pubmed ID	Journal	Application
Taotao Hou	39062540	Biomolecules	WB, IHC
Xiao Liu	37779872	J Cancer	WB

Storage

Storage:

Store at -20°C. Stable for one year after shipment.

Storage Buffer:

PBS with 0.02% sodium azide and 50% glycerol pH 7.3.

Aliquoting is unnecessary for -20°C storage

*** 20ul sizes contain 0.1% BSA

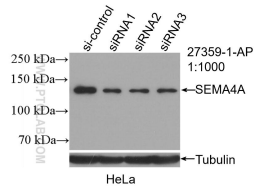
For technical support and original validation data for this product please contact:

T: 1 (888) 4PTGLAB (1-888-478-4522) (toll free in USA), or 1(312) 455-8498 (outside USA)

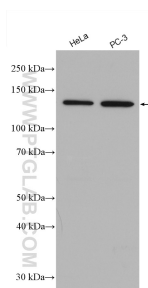
E: proteintech@ptglab.com
W: ptglab.com

This product is exclusively available under Proteintech Group brand and is not available to purchase from any other manufacturer.

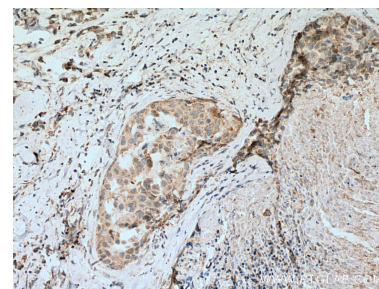
Selected Validation Data



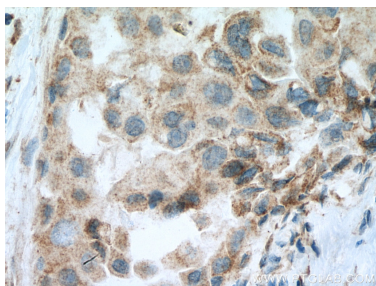
WB result of SEMA4A antibody (27359-1-AP; 1:1000; incubated at room temperature for 1.5 hours) with sh-Control and sh-SEMA4A transfected HeLa cells.



Various lysates were subjected to SDS PAGE followed by western blot with 27359-1-AP (SEMA4A antibody) at dilution of 1:1500 incubated at room temperature for 1.5 hours.



Immunohistochemical analysis of paraffin-embedded human breast cancer tissue slide using 27359-1-AP (SEMA4A antibody) at dilution of 1:200 (under 10x lens). Heat mediated antigen retrieval with Tris-EDTA buffer (pH 9.0).



Immunohistochemical analysis of paraffin-embedded human breast cancer tissue slide using 27359-1-AP (SEMA4A antibody) at dilution of 1:200 (under 40x lens). Heat mediated antigen retrieval with Tris-EDTA buffer (pH 9.0).