

For Research Use Only

STAMBPL1 Polyclonal antibody

Catalog Number: 27315-1-AP **1 Publications**



Basic Information

Catalog Number: 27315-1-AP	GenBank Accession Number: BC010846	Purification Method: Antigen affinity purification
Size: 150ul, Concentration: 500 µg/ml by Nanodrop and 333 µg/ml by Bradford method using BSA as the standard;	GeneID (NCBI): 57559	Recommended Dilutions: WB 1:1000-1:8000 IHC 1:50-1:500
Source: Rabbit	Full Name: STAM binding protein-like 1	
Isotype: IgG	Observed MW: 50 kDa	
Immunogen Catalog Number: AG26308		

Applications

Tested Applications: IHC, WB, ELISA	Positive Controls:
Cited Applications: WB	WB: A549 cells, HeLa cells, MCF-7 cells, human testis tissue, Jurkat cells
Species Specificity: human	IHC: human liver tissue, human colon tissue
Cited Species: human	

Note-IHC: suggested antigen retrieval with TE buffer pH 9.0; (*) Alternatively, antigen retrieval may be performed with citrate buffer pH 6.0

Background Information

Notable Publications

Author	Pubmed ID	Journal	Application
Xiang Yang	37393834	Transl Oncol	WB

Storage

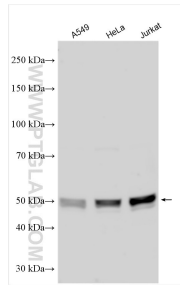
Storage:
Store at -20°C. Stable for one year after shipment.
Storage Buffer:
PBS with 0.02% sodium azide and 50% glycerol pH 7.3.
Aliquoting is unnecessary for -20°C storage

*** 20ul sizes contain 0.1% BSA

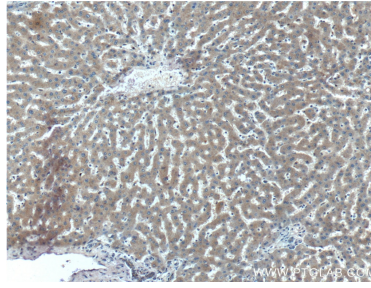
For technical support and original validation data for this product please contact:
T: 1 (888) 4PTGLAB (1-888-478-4522) (toll free in USA), or 1(312) 455-8498 (outside USA) E: proteintech@ptglab.com W: ptglab.com

This product is exclusively available under Proteintech Group brand and is not available to purchase from any other manufacturer.

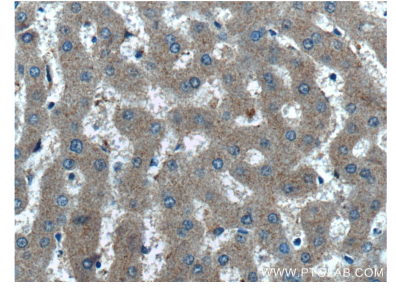
Selected Validation Data



Various lysates were subjected to SDS PAGE followed by western blot with 27315-1-AP (STAMBPL1 antibody) at dilution of 1:4000 incubated at room temperature for 1.5 hours.



Immunohistochemical analysis of paraffin-embedded human liver tissue slide using 27315-1-AP (STAMBPL1 antibody) at dilution of 1:200 (under 10x lens).



Immunohistochemical analysis of paraffin-embedded human liver tissue slide using 27315-1-AP (STAMBPL1 antibody) at dilution of 1:200 (under 40x lens).