

For Research Use Only

SELENBP1 Polyclonal antibody

Catalog Number: 27230-1-AP **1 Publications**



Basic Information

Catalog Number: 27230-1-AP	GenBank Accession Number: BC009084	Purification Method: Antigen affinity purification
Size: 150ul , Concentration: 300 µg/ml by Nanodrop and 233 µg/ml by Bradford method using BSA as the standard;	GeneID (NCBI): 8991	Recommended Dilutions: WB 1:500-1:3000 IHC 1:50-1:500
Source: Rabbit	Full Name: selenium binding protein 1	
Isotype: IgG	Calculated MW: 52 kDa	
Immunogen Catalog Number: AG20967	Observed MW: 45 kDa, 52 kDa, 56 kDa	

Applications

Tested Applications: IHC, WB, ELISA	Positive Controls: WB : mouse liver tissue, A549 cells
Cited Applications: WB	IHC : human liver tissue, human lung cancer tissue
Species Specificity: human, mouse	
Cited Species: human	

Note-IHC: suggested antigen retrieval with TE buffer pH 9.0; (*) Alternatively, antigen retrieval may be performed with citrate buffer pH 6.0

Background Information

SELENBP1 (selenium binding protein 1, SBP1), also known as LPSB or SP56, is a 472 amino acid peripheral membrane protein that binds selenium covalently. Selenium, an essential trace element, has been shown to have an anti-cancer effect. Many reports have described a relationship between insufficient selenium intake and increased risk of cancer. Moreover, the expression of SELENBP1 has been shown to be decreased in several tumors including cancers of the prostate, lungs, colon, and ovary (PMID: 21143902, 20332323, 18272210). SELENBP1 has four isoforms with the molecular mass of 56kD, 52kD and 45kD.

Notable Publications

Author	Pubmed ID	Journal	Application
Cheng Zhu	36253721	BMC Gastroenterol	WB

Storage

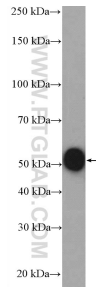
Storage:
Store at -20°C. Stable for one year after shipment.
Storage Buffer:
PBS with 0.02% sodium azide and 50% glycerol pH 7.3.
Aliquoting is unnecessary for -20°C storage

***** 20ul sizes contain 0.1% BSA**

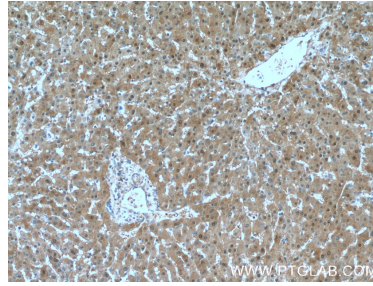
For technical support and original validation data for this product please contact:
T: 1 (888) 4PTGLAB (1-888-478-4522) (toll free in USA), or 1(312) 455-8498 (outside USA)
E: proteintech@ptglab.com
W: ptglab.com

This product is exclusively available under Proteintech Group brand and is not available to purchase from any other manufacturer.

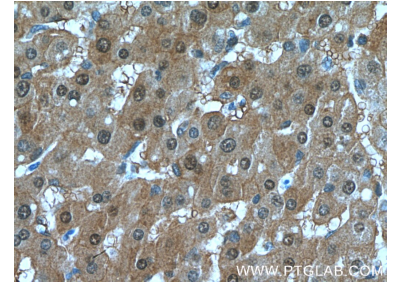
Selected Validation Data



mouse liver tissue were subjected to SDS PAGE followed by western blot with 27230-1-AP (SELENBP1 antibody) at dilution of 1:1500 incubated at room temperature for 1.5 hours.



Immunohistochemical analysis of paraffin-embedded human liver tissue slide using 27230-1-AP (SELENBP1 Antibody) at dilution of 1:200 (under 10x lens).



Immunohistochemical analysis of paraffin-embedded human liver tissue slide using 27230-1-AP (SELENBP1 Antibody) at dilution of 1:200 (under 40x lens).