

For Research Use Only

EGF Polyclonal antibody

Catalog Number: 27141-1-AP **6 Publications**



Basic Information

| | | |
|--|---|--|
| Catalog Number: 27141-1-AP | GenBank Accession Number: BC093731 | Purification Method: Antigen affinity purification |
| Size: 150ul , Concentration: 750 µg/ml by Nanodrop and 367 µg/ml by Bradford method using BSA as the standard; | GeneID (NCBI): 1950 | Recommended Dilutions: IHC 1:50-1:500 |
| Source: Rabbit | Full Name: epidermal growth factor (beta-urogastrone) | |
| Isotype: IgG | Calculated MW: 1207 aa, 134 kDa | |
| Immunogen Catalog Number: AG25997 | | |

Applications

| | |
|---|---|
| Tested Applications: IHC, ELISA | Positive Controls: IHC : human skin tissue, |
| Cited Applications: IHC, WB | |
| Species Specificity: human | |
| Cited Species: human | |

Note-IHC: suggested antigen retrieval with TE buffer pH 9.0; (*) Alternatively, antigen retrieval may be performed with citrate buffer pH 6.0

Background Information

Epidermal growth factor (EGF) is a small 6 kD polypeptide and has six conserved cysteine residues that form three intramolecular disulfide bonds. Human EGF is synthesized as transmembrane precursor proteins (1207 amino acids), which are proteolytically cleaved to generate the 54 amino acid mature EGF.

Notable Publications

| Author | Pubmed ID | Journal | Application |
|----------------|-----------|------------------------------------|-------------|
| Ruichuang Yang | 34824590 | Evid Based Complement Alternat Med | WB |
| Enjie Li | 35502895 | Elife | WB, IHC |
| Zu-Jun Que | 32240782 | J Ethnopharmacol | WB |

Storage

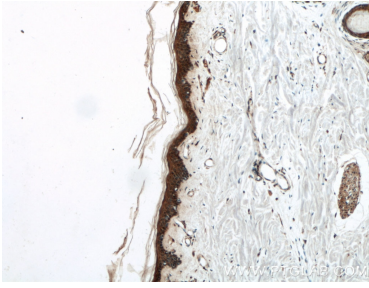
Storage:
Store at -20°C. Stable for one year after shipment.
Storage Buffer:
PBS with 0.02% sodium azide and 50% glycerol pH 7.3.
Aliquoting is unnecessary for -20°C storage

*** 20ul sizes contain 0.1% BSA

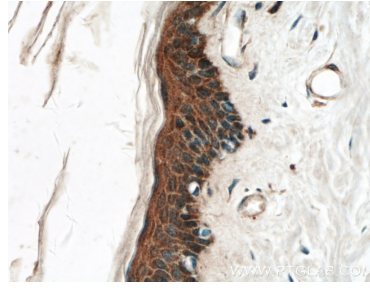
For technical support and original validation data for this product please contact:
T: 1 (888) 4PTGLAB (1-888-478-4522) (toll free in USA), or 1(312) 455-8498 (outside USA)
E: proteintech@ptglab.com
W: ptglab.com

This product is exclusively available under Proteintech Group brand and is not available to purchase from any other manufacturer.

Selected Validation Data



Immunohistochemical analysis of paraffin-embedded human skin tissue slide using 27141-1-AP (EGF antibody) at dilution of 1:200 (under 10x lens).



Immunohistochemical analysis of paraffin-embedded human skin tissue slide using 27141-1-AP (EGF antibody) at dilution of 1:200 (under 40x lens).