

For Research Use Only

EMR1 Polyclonal antibody

Catalog Number: 27044-1-AP **31 Publications**



Basic Information

Catalog Number: 27044-1-AP	GenBank Accession Number: BC059395	Purification Method: Antigen affinity purification
Size: 150ul , Concentration: 350 µg/ml by Nanodrop;	GeneID (NCBI): 2015	Recommended Dilutions: WB 1:500-1:2000 IHC 1:400-1:1600 IF 1:50-1:500
Source: Rabbit	UNIPROT ID: Q14246	
Isotype: IgG	Full Name: egf-like module containing, mucin-like, hormone receptor-like 1	
Immunogen Catalog Number: AG25883	Calculated MW: 886 aa, 97 kDa	
	Observed MW: 160 kDa	

Applications

Tested Applications: WB, IF, IHC, ELISA	Positive Controls: WB : unboiled RAW 264.7 cells, HL-60 cells IHC : mouse spleen tissue, mouse liver tissue IF : mouse peritoneal macrophages,
Cited Applications: WB, IF, IHC	
Species Specificity: human, mouse	
Cited Species: human, rat, mouse, pig	
Note-IHC: suggested antigen retrieval with TE buffer pH 9.0; (*) Alternatively, antigen retrieval may be performed with citrate buffer pH 6.0	

Background Information

EMR1 (EGF-like module containing mucin-like hormone receptor 1), also known as Adhesion G protein-coupled receptor E1 (ADGRE1), is a surface receptor with seven transmembrane segments that belong to the EGF-7-transmembrane family of G protein-coupled receptors (PMID: 14647991, 7601460). EMR1 expression is restricted to eosinophilic granulocytes, where expression is overlapping with the eotaxin receptor CCR3 and the immunoglobulin-like lectin Siglec-8. Absence on other leukocytes, including basophils, implies that EMR1 is a highly specific marker for eosinophils in humans and may be used as a novel therapeutic target for eosinophilic disorders (PMID: 17823986, 24530099). F4/80, the murine homolog of EMR1, is a marker of murine macrophage. The apparent molecular weight of F4/80 is 160 kDa, which is larger than the calculated molecular weight due to post-translational modifications (PMID: 7308288; 8647179).

Notable Publications

Author	Pubmed ID	Journal	Application
Yu-Hui Gu	36386139	Front Pharmacol	IF
Junjie Li	33080309	Cancer Lett	IF
Huihui Tao	34843873	Toxicol Lett	IHC

Storage

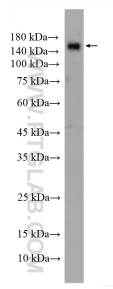
Storage:
Store at -20°C. Stable for one year after shipment.
Storage Buffer:
PBS with 0.02% sodium azide and 50% glycerol pH 7.3.
Aliquoting is unnecessary for -20°C storage

*** 20ul sizes contain 0.1% BSA

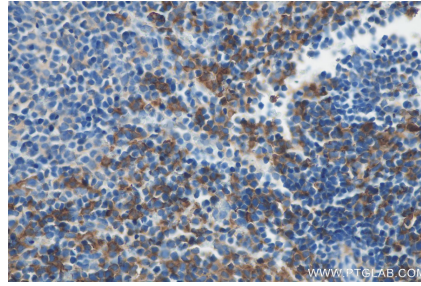
For technical support and original validation data for this product please contact:
T: 1 (888) 4PTGLAB (1-888-478-4522) (toll free in USA), or 1(312) 455-8498 (outside USA)
E: proteintech@ptglab.com
W: ptglab.com

This product is exclusively available under Proteintech Group brand and is not available to purchase from any other manufacturer.

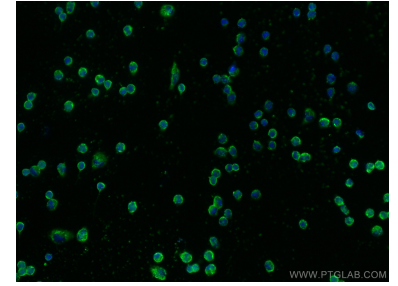
Selected Validation Data



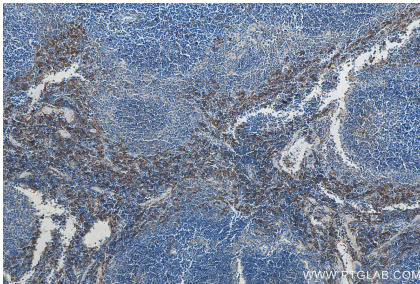
unboiled RAW 264.7 cells were subjected to SDS PAGE followed by western blot with 27044-1-AP (EMR1 antibody) at dilution of 1:1000 incubated at room temperature for 1.5 hours.



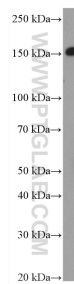
Immunohistochemical analysis of paraffin-embedded mouse spleen tissue slide using 27044-1-AP (EMR1 antibody) at dilution of 1:800 (under 40x lens). Heat mediated antigen retrieval with Tris-EDTA buffer (pH 9.0).



Immunofluorescent analysis of (-20°C Ethanol) fixed mouse peritoneal macrophages using EMR1 antibody (27044-1-AP) at dilution of 1:200 and CoraLite®488-Conjugated AffiniPure Goat Anti-Rabbit IgG(H+L).



Immunohistochemical analysis of paraffin-embedded mouse spleen tissue slide using 27044-1-AP (EMR1 antibody) at dilution of 1:800 (under 10x lens). Heat mediated antigen retrieval with Tris-EDTA buffer (pH 9.0).



HL-60 cells were subjected to SDS PAGE followed by western blot with 27044-1-AP (EMR1 antibody) at dilution of 1:300 incubated at room temperature for 1.5 hours.