

For Research Use Only

# ERCC6L2 Polyclonal antibody

Catalog Number: 27028-1-AP



## Basic Information

<b>Catalog Number:</b> 27028-1-AP	<b>GenBank Accession Number:</b> BC140702	<b>Purification Method:</b> Protein A purification
<b>Size:</b> 150ul , Concentration: 230 µg/ml by Nanodrop and 233 µg/ml by Bradford method using BSA as the standard;	<b>GeneID (NCBI):</b> 375748	<b>Recommended Dilutions:</b> WB 1:500-1:1000
<b>Source:</b> Rabbit	<b>Full Name:</b> chromosome 9 open reading frame 102	
<b>Isotype:</b> IgG	<b>Calculated MW:</b> 712 aa, 81 kDa	
<b>Immunogen Catalog Number:</b> AG19348	<b>Observed MW:</b> 70-80 kDa	

## Applications

<b>Tested Applications:</b> WB, ELISA	<b>Positive Controls:</b> WB : PC-3 cells, HepG2 cells
<b>Species Specificity:</b> human	

## Background Information

ERCC6L2 , also known as RAD26L or C9orf102 belongs to the SNF2/RAD54 helicase family and is expressed in bone marrow. C9orf102 may be involved in early DNA damage response. C9orf102 is phosphorylated by NEK6. C9orf102 exists some isoforms with the molecular weight 177, 80, 60, 40 kDa.

## Storage

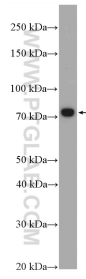
**Storage:**  
Store at -20°C. Stable for one year after shipment.  
**Storage Buffer:**  
PBS with 0.02% sodium azide and 50% glycerol pH 7.3.  
Aliquoting is unnecessary for -20°C storage

\*\*\* 20ul sizes contain 0.1% BSA

For technical support and original validation data for this product please contact:  
T: 1 (888) 4PTGLAB (1-888-478-4522) (toll free in USA), or 1(312) 455-8498 (outside USA)      E: proteintech@ptglab.com  
W: ptglab.com

This product is exclusively available under Proteintech Group brand and is not available to purchase from any other manufacturer.

## Selected Validation Data



PC-3 cells were subjected to SDS PAGE followed by western blot with 27028-1-AP (ERCC6L2 antibody) at dilution of 1:600 incubated at room temperature for 1.5 hours.