

For Research Use Only

MATE 2 Polyclonal antibody

Catalog Number: 26873-1-AP



Basic Information

Catalog Number: 26873-1-AP	GenBank Accession Number: BC035288	Purification Method: Antigen affinity purification
Size: 150ul , Concentration: 650 µg/ml by Nanodrop and 367 µg/ml by Bradford method using BSA as the standard;	GeneID (NCBI): 146802	Recommended Dilutions: WB 1:500-1:1000
Source: Rabbit	Full Name: solute carrier family 47, member 2	
Isotype: IgG	Calculated MW: 602 aa, 65 kDa	
Immunogen Catalog Number: AG25472	Observed MW: 65-70 kDa	

Applications

Tested Applications: WB, ELISA	Positive Controls: WB : MDCK cells,
Species Specificity: human, Canine	

Background Information

Storage

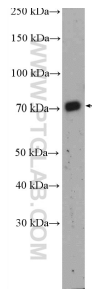
Storage:
Store at -20°C. Stable for one year after shipment.
Storage Buffer:
PBS with 0.02% sodium azide and 50% glycerol pH 7.3.
Aliquoting is unnecessary for -20°C storage

*** 20ul sizes contain 0.1% BSA

For technical support and original validation data for this product please contact:
T: 1 (888) 4PTGLAB (1-888-478-4522) (toll free in USA), or 1(312) 455-8498 (outside USA) E: proteintech@ptglab.com
W: ptglab.com

This product is exclusively available under Proteintech Group brand and is not available to purchase from any other manufacturer.

Selected Validation Data



MDCK cells were subjected to SDS PAGE followed by western blot with 26873-1-AP (MATE 2 antibody) at dilution of 1:600 incubated at room temperature for 1.5 hours.