

For Research Use Only

# KCC4/SLC12A7 Polyclonal antibody

Catalog Number: 26590-1-AP



## Basic Information

<b>Catalog Number:</b> 26590-1-AP	<b>GenBank Accession Number:</b> BC098390	<b>Purification Method:</b> Antigen affinity purification
<b>Size:</b> 150ul , Concentration: 900 µg/ml by Nanodrop;	<b>GeneID (NCBI):</b> 10723	<b>Recommended Dilutions:</b> WB 1:2000-1:10000 IF 1:200-1:800
<b>Source:</b> Rabbit	<b>UNIPROT ID:</b> Q9Y666	
<b>Isotype:</b> IgG	<b>Full Name:</b> solute carrier family 12 (potassium/chloride transporters), member 7	
<b>Immunogen Catalog Number:</b> AG24954	<b>Observed MW:</b> 119 kDa	

## Applications

<b>Tested Applications:</b> WB, IF, ELISA	<b>Positive Controls:</b>
<b>Species Specificity:</b> human	<b>WB :</b> BGC-823 cells, NCI-H1299 cells, Raji cells, SH-SY5Y cells <b>IF :</b> A431 cells,

## Background Information

KCC4, also named as Solute carrier family 12 member 7 (SLC12A7), is a 1083 amino-acid protein, which belongs to the SLC12A transporter family. As a multi-pass membrane protein, the molecular weight of KCC4 is 119 kDa. KCC4 mediates electroneutral potassium-chloride cotransport when activated by cell swelling. Moreover, KCC4 may mediate K<sup>+</sup> uptake into Deiters' cells in the cochlea and contribute to K<sup>+</sup> recycling in the inner ear. KCC4 is important for the survival of cochlear outer and inner hair cells and the maintenance of the organ of Corti (Uniprot, GeneID:10723).

## Storage

**Storage:**  
Store at -20°C. Stable for one year after shipment.  
**Storage Buffer:**  
PBS with 0.02% sodium azide and 50% glycerol pH 7.3.  
Aliquoting is unnecessary for -20°C storage

\*\*\* 20ul sizes contain 0.1% BSA

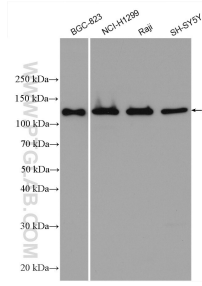
For technical support and original validation data for this product please contact:

T: 1 (888) 4PTGLAB (1-888-478-4522) (toll free in USA), or 1(312) 455-8498 (outside USA)

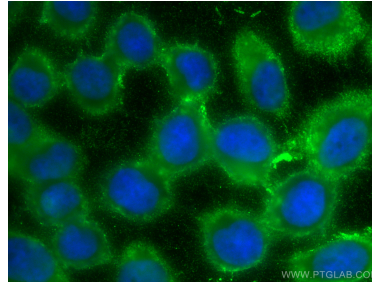
E: [proteintech@ptglab.com](mailto:proteintech@ptglab.com)  
W: [ptglab.com](http://ptglab.com)

This product is exclusively available under Proteintech Group brand and is not available to purchase from any other manufacturer.

## Selected Validation Data



Various lysates were subjected to SDS PAGE followed by western blot with 26590-1-AP (KCC4/SLC12A7 antibody) at dilution of 1:5000 incubated at room temperature for 1.5 hours.



Immunofluorescent analysis of (-20°C Methanol) fixed A431 cells using KCC4/SLC12A7 antibody (26590-1-AP) at dilution of 1:400 and CoraLite®488-Conjugated AffiniPure Goat Anti-Rabbit IgG(H+L).