

For Research Use Only

PMPCA Polyclonal antibody

Catalog Number: 26536-1-AP **2 Publications**



Basic Information

Catalog Number:

26536-1-AP

Size:

150ul, Concentration: 240 µg/ml by Nanodrop and 200 µg/ml by Bradford method using BSA as the standard;

Source:

Rabbit

Isotype:

IgG

Immunogen Catalog Number:

AG19206

GenBank Accession Number:

BC132724

GeneID (NCBI):

23203

UNIPROT ID:

Q10713

Full Name:

peptidase (mitochondrial processing)

alpha

Calculated MW:

525 aa, 58 kDa

Observed MW:

50-58 kDa

Purification Method:

Antigen affinity purification

Recommended Dilutions:

WB 1:500-1:2000

IP 0.5-4.0 ug for 1.0-3.0 mg of total

protein lysate

IF 1:50-1:500

Applications

Tested Applications:

WB, IP, IF, ELISA

Cited Applications:

WB

Species Specificity:

human

Cited Species:

human

Positive Controls:

WB : MDA-MB-453s cells, T-47D cells

IP : MDA-MB-453s cells,

IF : T-47D cells,

Notable Publications

Author	Pubmed ID	Journal	Application
Yi Na Dong	30590615	Hum Mol Genet	WB
Jacob M Wozniak	38167919	Nat Chem Biol	WB

Storage

Storage:

Store at -20°C. Stable for one year after shipment.

Storage Buffer:

PBS with 0.02% sodium azide and 50% glycerol pH 7.3.

Aliquoting is unnecessary for -20°C storage

***** 20ul sizes contain 0.1% BSA**

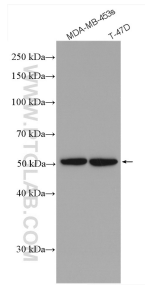
For technical support and original validation data for this product please contact:

T: 1 (888) 4PTGLAB (1-888-478-4522) (toll free in USA), or 1(312) 455-8498 (outside USA)

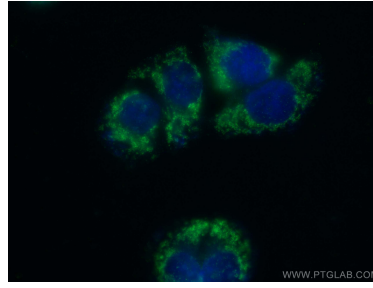
E: proteintech@ptglab.com
W: ptglab.com

This product is exclusively available under Proteintech Group brand and is not available to purchase from any other manufacturer.

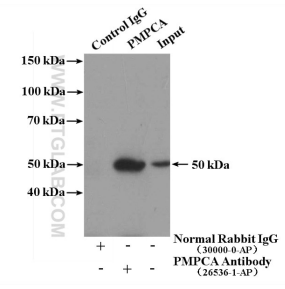
Selected Validation Data



Various lysates were subjected to SDS PAGE followed by western blot with 26536-1-AP (PMPCA antibody) at dilution of 1:1000 incubated at room temperature for 1.5 hours.



Immunofluorescent analysis of (-20°C Ethanol) fixed T-47D cells using 26536-1-AP (PMPCA antibody), at dilution of 1:200 and CoraLite®488-Conjugated AffiniPure Goat Anti-Rabbit IgG(H+L).



IP result of anti-PMPCA (IP:26536-1-AP, 4ug; Detection:26536-1-AP 1:500) with MDA-MB-453s cells lysate 2800ug.