

For Research Use Only

SLC2A9 Polyclonal antibody

Catalog Number: 26486-1-AP **31 Publications**



Basic Information

Catalog Number: 26486-1-AP	GenBank Accession Number: BC018897	Purification Method: Antigen affinity purification
Size: 150ul, Concentration: 1000 µg/ml by Nanodrop;	GeneID (NCBI): 56606	Recommended Dilutions: WB 1:500-1:1000 IHC 1:50-1:500
Source: Rabbit	UNIPROT ID: Q9NRM0	
Isotype: IgG	Full Name: solute carrier family 2 (facilitated glucose transporter), member 9	
Immunogen Catalog Number: AG24135	Calculated MW: 540 aa, 59 kDa	
	Observed MW: 60 kDa	

Applications

Tested Applications: WB, IHC, ELISA	Positive Controls:
Cited Applications: WB, IF, IHC	WB: mouse liver tissue,
Species Specificity: human, mouse	IHC: human liver tissue, human hepatocirrhosis tissue
Cited Species: human, rat, mouse	
Note-IHC: suggested antigen retrieval with TE buffer pH 9.0; (*) Alternatively, antigen retrieval may be performed with citrate buffer pH 6.0	

Notable Publications

Author	Pubmed ID	Journal	Application
Tianshu Gao	36120294	Front Pharmacol	WB
Haochen Guan	36063871	Eur J Pharmacol	WB
Guoshu Lin	34699754	Eur J Pharmacol	WB

Storage

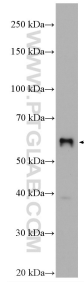
Storage:
Store at -20°C. Stable for one year after shipment.
Storage Buffer:
PBS with 0.02% sodium azide and 50% glycerol pH 7.3.
Aliquoting is unnecessary for -20°C storage

*** 20ul sizes contain 0.1% BSA

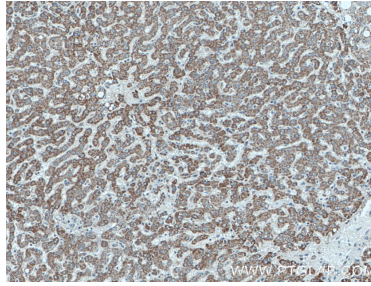
For technical support and original validation data for this product please contact:
T: 1 (888) 4PTGLAB (1-888-478-4522) (toll free in USA), or 1(312) 455-8498 (outside USA)
E: proteintech@ptglab.com
W: ptglab.com

This product is exclusively available under Proteintech Group brand and is not available to purchase from any other manufacturer.

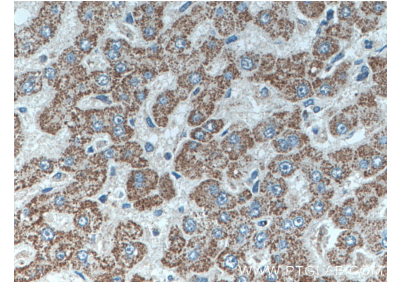
Selected Validation Data



mouse liver tissue were subjected to SDS PAGE followed by western blot with 26486-1-AP (SLC2A9 antibody) at dilution of 1:600 incubated at room temperature for 1.5 hours.



Immunohistochemical analysis of paraffin-embedded human liver tissue slide using 26486-1-AP (SLC2A9 antibody) at dilution of 1:200 (under 10x lens).



Immunohistochemical analysis of paraffin-embedded human liver tissue slide using 26486-1-AP (SLC2A9 antibody) at dilution of 1:200 (under 40x lens).