

For Research Use Only

pan-keratin Polyclonal antibody

Catalog Number: 26411-1-AP **30 Publications**



Basic Information

Catalog Number: 26411-1-AP	GenBank Accession Number: BC024292	Purification Method: Antigen affinity purification
Size: 150ul, Concentration: 700 µg/ml by Nanodrop and 70 µg/ml by Bradford method using BSA as the standard;	GeneID (NCBI): 3852	Recommended Dilutions: WB 1:50000-1:200000
Source: Rabbit	UNIPROT ID: P13647	IHC 1:1500-1:6000
Isotype: IgG	Full Name: keratin 5	IF 1:200-1:800
Immunogen Catalog Number: AG24184	Calculated MW: 590 aa, 62 kDa	
	Observed MW: 46-58 kDa	

Applications

Tested Applications: WB, IF, IHC, ELISA	Positive Controls: WB : A431 cells, MCF-7 cells, HeLa cells
Cited Applications: WB, IF, IHC	IHC : human oesophagus tissue, human liver tissue, human lung cancer tissue, human renal cell carcinoma tissue, human tonsillitis tissue
Species Specificity: human	IF : human colon cancer tissue, HeLa cells, A431 cells
Cited Species: human, rat, sheep, mouse	

Note-IHC: suggested antigen retrieval with TE buffer pH 9.0; (*) Alternatively, antigen retrieval may be performed with citrate buffer pH 6.0

Background Information

Keratins are a large family of proteins that form the intermediate filament cytoskeleton of epithelial cells, which are classified into two major sequence types. Type I keratins are a group of acidic intermediate filament proteins, including K9-K23, and the hair keratins Ha1-Ha8. Type II keratins are the basic or neutral counterparts to the acidic type I keratins, including K1-K8, and the hair keratins, Hb1-Hb6. Keratin isoforms demonstrate tissue- and differentiation-specific profiles that make them useful as research biomarkers. Research studies have shown that mutations in keratin genes are associated with skin disorders, liver and pancreatic diseases, and inflammatory intestinal diseases. This antibody is a pan-keratin antibody.

Notable Publications

Author	Pubmed ID	Journal	Application
Yang Wang	34560900	J Exp Clin Cancer Res	WB
Lijun Li	36102310	Int J Oncol	IHC
Yanbo Dong	34778255	Front Cell Dev Biol	IF

Storage

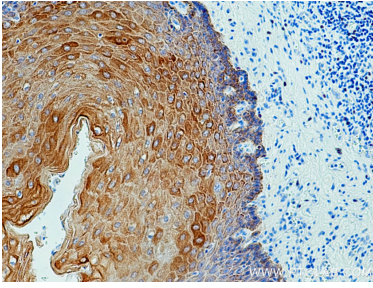
Storage:
Store at -20°C. Stable for one year after shipment.
Storage Buffer:
PBS with 0.02% sodium azide and 50% glycerol pH 7.3.
Aliquoting is unnecessary for -20°C storage

***** 20ul sizes contain 0.1% BSA**

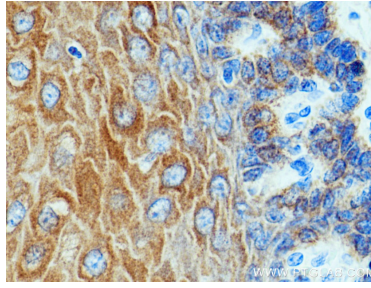
For technical support and original validation data for this product please contact:
T: 1 (888) 4PTGLAB (1-888-478-4522) (toll free in USA), or 1(312) 455-8498 (outside USA)
E: proteintech@ptglab.com
W: ptglab.com

This product is exclusively available under Proteintech Group brand and is not available to purchase from any other manufacturer.

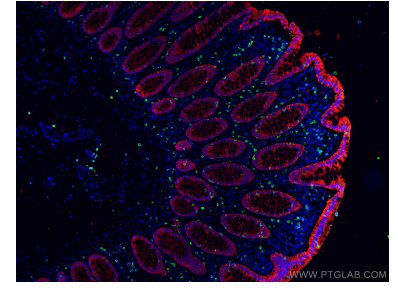
Selected Validation Data



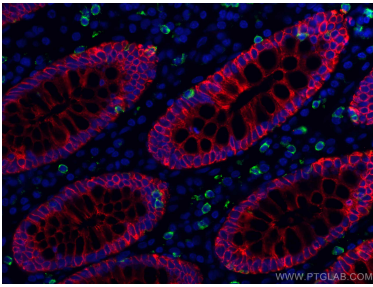
Immunohistochemical analysis of paraffin-embedded human oesophagus tissue slide using 26411-1-AP (pan-keratin antibody) at dilution of 1:3000 (under 10x lens)..



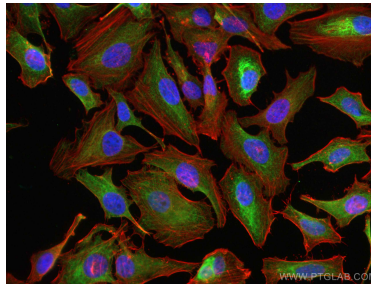
Immunohistochemical analysis of paraffin-embedded human oesophagus tissue slide using 26411-1-AP (pan-keratin antibody) at dilution of 1:3000 (under 40x lens)..



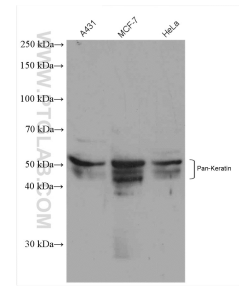
Immunofluorescent analysis of (4% PFA) fixed human colon cancer tissue using pan-keratin antibody (26411-1-AP) at dilution of 1:400 and CoraLite®594-Conjugated AffiniPure Goat Anti-Rabbit IgG(H+L), CD8 antibody (66868-1-Ig, Clone: 1G2B10, green).



Immunofluorescent analysis of (4% PFA) fixed human colon cancer tissue using pan-keratin antibody (26411-1-AP) at dilution of 1:400 and CoraLite®594-Conjugated AffiniPure Goat Anti-Rabbit IgG(H+L), CD8 antibody (66868-1-Ig, Clone: 1G2B10, green).



Immunofluorescent analysis of (4% PFA) fixed HeLa cells using pan-keratin antibody (26411-1-AP) at dilution of 1:200 and CoraLite®488-Conjugated AffiniPure Goat Anti-Rabbit IgG(H+L).



Various lysates were subjected to SDS PAGE followed by western blot with 26411-1-AP (pan-keratin antibody) at dilution of 1:100000 incubated at room temperature for 1.5 hours.