

For Research Use Only

# AE2 Polyclonal antibody

Catalog Number: 26332-1-AP **1 Publications**



## Basic Information

<b>Catalog Number:</b> 26332-1-AP	<b>GenBank Accession Number:</b> BC028601	<b>Purification Method:</b> Antigen affinity purification
<b>Size:</b> 150ul , Concentration: 1200 µg/ml by Nanodrop and 533 µg/ml by Bradford method using BSA as the standard;	<b>GeneID (NCBI):</b> 6522	<b>Recommended Dilutions:</b> WB 1:500-1:1000 IHC 1:200-1:800
<b>Source:</b> Rabbit	<b>Full Name:</b> solute carrier family 4, anion exchanger, member 2 (erythrocyte membrane protein band 3-like 1)	
<b>Isotype:</b> IgG	<b>Calculated MW:</b> 1241 aa, 137 kDa	
<b>Immunogen Catalog Number:</b> AG23673	<b>Observed MW:</b> 150 and 70 kDa	

## Applications

<b>Tested Applications:</b> IHC, WB, ELISA	<b>Positive Controls:</b> WB : A549 cells, HeLa cells
<b>Cited Applications:</b> WB	<b>IHC :</b> human liver cancer tissue, human lung cancer tissue
<b>Species Specificity:</b> human	
<b>Cited Species:</b> human	

**Note-IHC: suggested antigen retrieval with TE buffer pH 9.0; (\*) Alternatively, antigen retrieval may be performed with citrate buffer pH 6.0**

## Background Information

SLC4A2, also named as AE2, encodes a Cl<sup>-</sup>/HCO<sub>3</sub><sup>-</sup> exchanger. It has been reported that the reduced expression of SLC4A2 found in the liver and peripheral blood mononuclear cells of patients may be associated with the hypermethylation of SLC4A2 promoter regions, which might contribute to the pathogenesis of primary biliary cholangitis (PBC). 26332-1-AP antibody detects 150 kDa and 70 kDa (XP\_006716157, 666aa) protein in SDS-PAGE. (PMID: 23341620, 32039364)

## Notable Publications

Author	Pubmed ID	Journal	Application
Eunus S Ali	35772404	Mol Cell	WB

## Storage

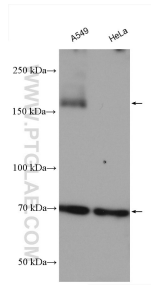
**Storage:**  
Store at -20°C. Stable for one year after shipment.  
**Storage Buffer:**  
PBS with 0.02% sodium azide and 50% glycerol pH 7.3.  
Aliquoting is unnecessary for -20°C storage

\*\*\* 20ul sizes contain 0.1% BSA

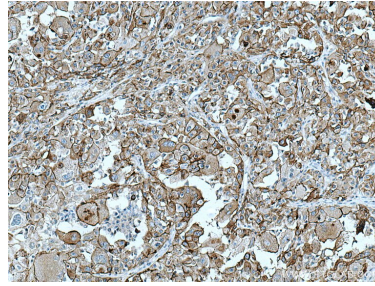
For technical support and original validation data for this product please contact:  
T: 1 (888) 4PTGLAB (1-888-478-4522) (toll free in USA), or 1(312) 455-8498 (outside USA)  
E: proteintech@ptglab.com  
W: ptglab.com

This product is exclusively available under Proteintech Group brand and is not available to purchase from any other manufacturer.

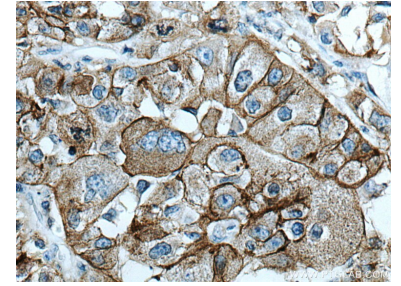
## Selected Validation Data



Various lysates were subjected to SDS PAGE followed by western blot with 26332-1-AP (AE2 antibody) at dilution of 1:800 incubated at room temperature for 1.5 hours.



Immunohistochemical analysis of paraffin-embedded human liver cancer tissue slide using 26332-1-AP (AE2 antibody) at dilution of 1:400 (under 10x lens). Heat mediated antigen retrieval with Tris-EDTA buffer (pH 9.0).



Immunohistochemical analysis of paraffin-embedded human liver cancer tissue slide using 26332-1-AP (AE2 antibody) at dilution of 1:400 (under 40x lens). Heat mediated antigen retrieval with Tris-EDTA buffer (pH 9.0).