

For Research Use Only

MCP-1 Polyclonal antibody

Catalog Number: 26161-1-AP **12 Publications**



Basic Information

Catalog Number: 26161-1-AP	GenBank Accession Number: NM-011333	Purification Method: Antigen affinity purification
Size: 150ul , Concentration: 600 µg/ml by Nanodrop;	GeneID (NCBI): 20296	Recommended Dilutions: WB 1:500-1:2000 IF 1:10-1:100
Source: Rabbit	Full Name: chemokine (C-C motif) ligand 2	
Isotype: IgG	Observed MW: 16-20 kDa	
Immunogen Catalog Number: AG24085		

Applications

Tested Applications: WB, IF, ELISA	Positive Controls: WB : LPS and Brefeldin A treated RAW 264.7 cells, IF : HeLa cells,
Cited Applications: WB, IF, IHC	
Species Specificity: human, mouse	
Cited Species: human, rat, mouse	

Background Information

Monocyte chemoattractant protein-1 (MCP-1/CCL2) is one of the key chemokines that regulate migration and infiltration of monocytes/macrophages. Both CCL2 and its receptor CCR2 have been demonstrated to be induced and involved in various diseases. Migration of monocytes from the blood stream across the vascular endothelium is required for routine immunological surveillance of tissues, as well as in response to inflammation.

Notable Publications

Author	Pubmed ID	Journal	Application
Katharina Steiner	35783100	Front Cell Neurosci	IF
Yaiza M Arenas	38671534	Biol Res	WB
Jing Ma	38522484	Free Radic Biol Med	WB

Storage

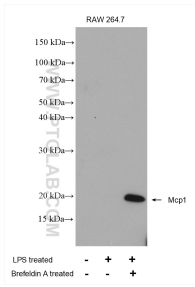
Storage:
Store at -20°C. Stable for one year after shipment.
Storage Buffer:
PBS with 0.02% sodium azide and 50% glycerol pH 7.3.
Aliquoting is unnecessary for -20°C storage

*** 20ul sizes contain 0.1% BSA

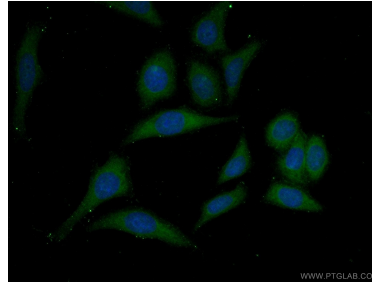
For technical support and original validation data for this product please contact:
T: 1 (888) 4PTGLAB (1-888-478-4522) (toll free in USA), or 1(312) 455-8498 (outside USA)
E: proteintech@ptglab.com
W: ptglab.com

This product is exclusively available under Proteintech Group brand and is not available to purchase from any other manufacturer.

Selected Validation Data



Untreated RAW 264.7 cells, RAW 264.7 cells (treated with 1 µg/ml LPS 20 hours then add 300 ng/ml Brefeldin A for 4 hours) were subjected to SDS PAGE followed by western blot with 26161-1-AP (Mcp1 antibody) at dilution of 1:1000 incubated at room temperature for 1.5 hours.



Immunofluorescent analysis of (-20°C Ethanol) fixed HeLa cells using 26161-1-AP (Mcp1 antibody) at dilution of 1:25 and Alexa Fluor 488-conjugated AffiniPure Goat Anti-Rabbit IgG(H+L).