

For Research Use Only

# C1orf58 Polyclonal antibody

Catalog Number: 26109-1-AP



## Basic Information

<b>Catalog Number:</b> 26109-1-AP	<b>GenBank Accession Number:</b> BC113635	<b>Purification Method:</b> Antigen affinity purification
<b>Size:</b> 150ul , Concentration: 240 µg/ml by Nanodrop and 200 µg/ml by Bradford method using BSA as the standard;	<b>GeneID (NCBI):</b> 148362	<b>Recommended Dilutions:</b> WB 1:200-1:1000
<b>Source:</b> Rabbit	<b>Full Name:</b> chromosome 1 open reading frame 58	IP 0.5-4.0 ug for IP and 1:200-1:1000
<b>Isotype:</b> IgG	<b>Observed MW:</b> 46 kDa	for WB IHC 1:50-1:500 IF 1:50-1:500
<b>Immunogen Catalog Number:</b> AG23443		

## Applications

<b>Tested Applications:</b> IF, IHC, IP, WB, ELISA	<b>Positive Controls:</b>
<b>Species Specificity:</b> human, mouse	<b>WB:</b> HEK-293 cells, mouse brain tissue
<b>Note-IHC: suggested antigen retrieval with TE buffer pH 9.0; (*) Alternatively, antigen retrieval may be performed with citrate buffer pH 6.0</b>	<b>IP:</b> HepG2 cells,
	<b>IHC:</b> human breast cancer tissue,
	<b>IF:</b> A431 cells,

## Background Information

### Storage

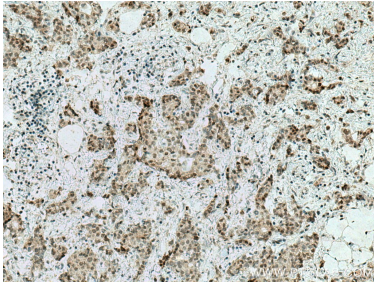
**Storage:**  
Store at -20°C. Stable for one year after shipment.  
**Storage Buffer:**  
PBS with 0.02% sodium azide and 50% glycerol pH 7.3.  
Aliquoting is unnecessary for -20°C storage

\*\*\* 20ul sizes contain 0.1% BSA

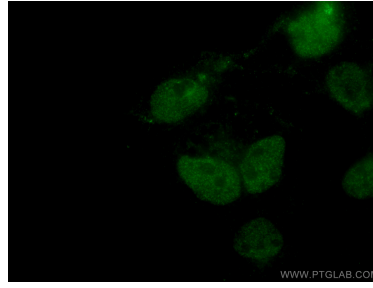
For technical support and original validation data for this product please contact:  
T: 1 (888) 4PTGLAB (1-888-478-4522) (toll free in USA), or 1(312) 455-8498 (outside USA)  
E: proteintech@ptglab.com  
W: ptglab.com

This product is exclusively available under Proteintech Group brand and is not available to purchase from any other manufacturer.

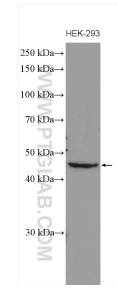
## Selected Validation Data



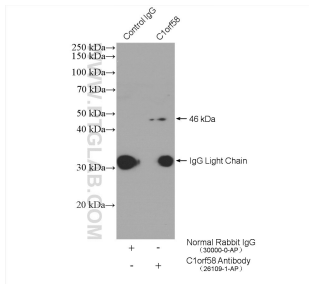
Immunohistochemical analysis of paraffin-embedded human breast cancer tissue slide using 26109-1-AP (C1orf58 antibody) at dilution of 1:200 (under 10x lens). Heat mediated antigen retrieval with Tris-EDTA buffer (pH 9.0).



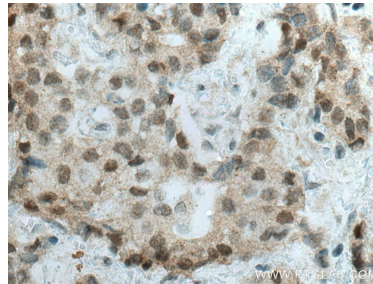
Immunofluorescent analysis of (4% PFA) fixed A431 cells using 26109-1-AP (C1orf58 antibody) at dilution of 1:100 and CoraLite488-Conjugated AffiniPure Goat Anti-Rabbit IgG(H+L).



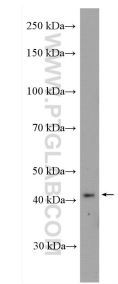
HEK293 cell lysates were subjected to SDS PAGE followed by western blot with 26109-1-AP (C1orf58 antibody) at dilution of 1:300 incubated at room temperature for 1.5 hours.



IP result of anti-C1orf58 (IP:26109-1-AP, 4ug; Detection:26109-1-AP 1:300) with HepG2 cells lysate 1680 ug.



Immunohistochemical analysis of paraffin-embedded human breast cancer tissue slide using 26109-1-AP (C1orf58 antibody) at dilution of 1:200 (under 40x lens). Heat mediated antigen retrieval with Tris-EDTA buffer (pH 9.0).



mouse brain tissue were subjected to SDS PAGE followed by western blot with 26109-1-AP (C1orf58 antibody) at dilution of 1:300 incubated at room temperature for 1.5 hours.