

For Research Use Only

PEDF Polyclonal antibody

Catalog Number: 26045-1-AP **3 Publications**



Basic Information

Catalog Number: 26045-1-AP	GenBank Accession Number: BC013984	Purification Method: Antigen affinity purification
Size: 150ul , Concentration: 350 µg/ml by Nanodrop and 233 µg/ml by Bradford method using BSA as the standard;	GeneID (NCBI): 5176	Recommended Dilutions: WB 1:500-1:2000
Source: Rabbit	Full Name: serpin peptidase inhibitor, clade F (alpha-2 antiplasmin, pigment epithelium derived factor), member 1	
Isotype: IgG	Calculated MW: 418 aa, 46 kDa	
Immunogen Catalog Number: AG23296	Observed MW: 46 kDa	

Applications

Tested Applications: WB, ELISA	Positive Controls: WB : A375 cells, human serum
Cited Applications: IF, WB	
Species Specificity: human	
Cited Species: human	

Background Information

PEDF also known as serpin F1 (SERPINF1), is a multifunctional secreted protein that has anti-angiogenic, anti-tumorigenic, and neurotrophic functions. It is an approximately 50-kDa secreted protein that is widely expressed, including by osteoblasts and osteoclasts. PEDF is also one of the most abundant secretory products of adipocytes, and circulating concentrations of PEDF correlate positively with body fat mass and INS resistance. PEDF is a neurotrophic factor involved in neuronal differentiation in retinoblastoma cells. Mutations in this gene were found in individuals with osteogenesis imperfecta, type VI.

Notable Publications

Author	Pubmed ID	Journal	Application
Xiaoyan Fu	31113934	Cell Death Dis	WB
Hao Zhang	34278806	Hum Gene Ther	WB
Lele Li	37070131	J Cell Mol Med	WB,IF

Storage

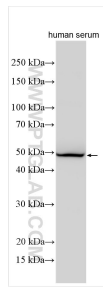
Storage:
Store at -20°C. Stable for one year after shipment.
Storage Buffer:
PBS with 0.02% sodium azide and 50% glycerol pH 7.3.
Aliquoting is unnecessary for -20°C storage

*** 20ul sizes contain 0.1% BSA

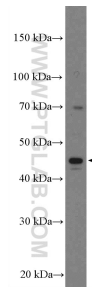
For technical support and original validation data for this product please contact:
T: 1 (888) 4PTGLAB (1-888-478-4522) (toll free in USA), or 1(312) 455-8498 (outside USA)
E: proteintech@ptglab.com
W: ptglab.com

This product is exclusively available under Proteintech Group brand and is not available to purchase from any other manufacturer.

Selected Validation Data



human serum were subjected to SDS PAGE followed by western blot with 26045-1-AP (PEDF antibody) at dilution of 1:1000 incubated at room temperature for 1.5 hours.



A375 cells were subjected to SDS PAGE followed by western blot with 26045-1-AP (PEDF antibody) at dilution of 1:1000 incubated at room temperature for 1.5 hours.