

For Research Use Only

LRRC32 Polyclonal antibody

Catalog Number: 26021-1-AP



Basic Information

Catalog Number: 26021-1-AP	GenBank Accession Number: BC070079	Purification Method: Antigen affinity purification
Size: 150ul , Concentration: 650 µg/ml by Nanodrop and 333 µg/ml by Bradford method using BSA as the standard;	GeneID (NCBI): 2615	Recommended Dilutions: WB 1:200-1:1000 IHC 1:50-1:500
Source: Rabbit	Full Name: leucine rich repeat containing 32	
Isotype: IgG	Calculated MW: 72 kDa	
Immunogen Catalog Number: AG23423	Observed MW: 80 kDa	

Applications

Tested Applications: IHC, WB, ELISA	Positive Controls: WB : HUVEC cells, IHC : human tonsillitis tissue, mouse spleen tissue
Species Specificity: human, mouse	
Note-IHC: suggested antigen retrieval with TE buffer pH 9.0; (*) Alternatively, antigen retrieval may be performed with citrate buffer pH 6.0	

Background Information

LRRC32, also known as GARP, is a transmembrane protein of 662 amino acids, the extracellular portion of which contains 20 leucine-rich repeats (PMID: 8180135). LRRC32 is a cell surface receptor on regulatory T-lymphocytes (Treg cells), platelets, hepatic stellate cells and certain cancer cells (PMID: 27054568). It has been demonstrated as a Treg-specific activation marker (PMID: 20137067). LRRC32 is critical for the surface expression of latent TGF-β by binding to the complex and functioning as its cell surface receptor (PMID: 19651619).

Storage

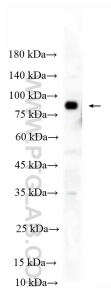
Storage:
Store at -20°C. Stable for one year after shipment.
Storage Buffer:
PBS with 0.02% sodium azide and 50% glycerol pH 7.3.
Aliquoting is unnecessary for -20°C storage

*** 20ul sizes contain 0.1% BSA

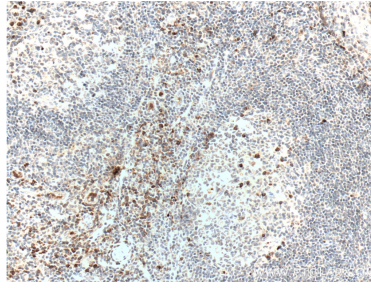
For technical support and original validation data for this product please contact:
T: 1 (888) 4PTGLAB (1-888-478-4522) (toll free in USA), or 1(312) 455-8498 (outside USA) E: proteintech@ptglab.com
W: ptglab.com

This product is exclusively available under Proteintech Group brand and is not available to purchase from any other manufacturer.

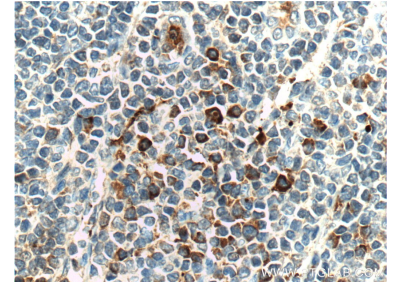
Selected Validation Data



HUVEC cells were subjected to SDS PAGE followed by western blot with 26021-1-AP (LRRC32 antibody) at dilution of 1:300 incubated at room temperature for 1.5 hours.



Immunohistochemical analysis of paraffin-embedded human tonsillitis tissue slide using 26021-1-AP (LRRC32 Antibody) at dilution of 1:200 (under 10x lens). Heat mediated antigen retrieval with Tris-EDTA buffer (pH 9.0).



Immunohistochemical analysis of paraffin-embedded human tonsillitis tissue slide using 26021-1-AP (LRRC32 Antibody) at dilution of 1:200 (under 40x lens). Heat mediated antigen retrieval with Tris-EDTA buffer (pH 9.0).