

For Research Use Only

# KIF14 Polyclonal antibody

Catalog Number: 26000-1-AP **2 Publications**



## Basic Information

**Catalog Number:**

26000-1-AP

**Size:**

150ul, Concentration: 500 ug/ml by Nanodrop and 267 ug/ml by Bradford method using BSA as the standard;

**Source:**

Rabbit

**Isotype:**

IgG

**Immunogen Catalog Number:**

AG23219

**GenBank Accession Number:**

BC113742

**GeneID (NCBI):**

9928

**UNIPROT ID:**

Q15058

**Full Name:**

kinesin family member 14

**Purification Method:**

Antigen affinity purification

**Recommended Dilutions:**

WB 1:200-1:1000

IP 0.5-4.0 ug for 1.0-3.0 mg of total protein lysate

IHC 1:50-1:500

## Applications

**Tested Applications:**

WB, IP, IHC, ELISA

**Cited Applications:**

WB, IF, IHC

**Species Specificity:**

human

**Cited Species:**

human

**Note-IHC: suggested antigen retrieval with TE buffer pH 9.0; (\*) Alternatively, antigen retrieval may be performed with citrate buffer pH 6.0**

**Positive Controls:**

WB: T-47D cells, HEK-293T cells, HeLa cells

IP: HEK-293T cells,

IHC: human prostate cancer tissue,

## Notable Publications

Author	Pubmed ID	Journal	Application
Tiefeng Jin	38498903	J Cell Mol Med	WB,IF
Zhanming Ma	38505063	J Thorac Dis	IHC

## Storage

**Storage:**

Store at -20°C. Stable for one year after shipment.

**Storage Buffer:**

PBS with 0.02% sodium azide and 50% glycerol pH 7.3.

Aliquoting is unnecessary for -20°C storage

\*\*\* 20ul sizes contain 0.1% BSA

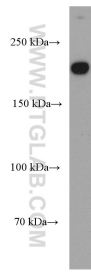
For technical support and original validation data for this product please contact:

T: 1 (888) 4PTGLAB (1-888-478-4522) (toll free in USA), or 1(312) 455-8498 (outside USA)

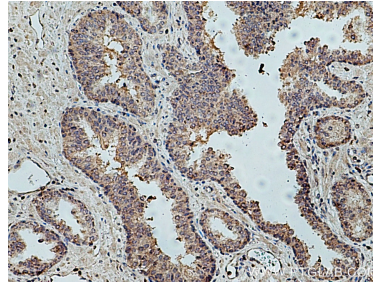
E: proteintech@ptglab.com  
W: ptglab.com

This product is exclusively available under Proteintech Group brand and is not available to purchase from any other manufacturer.

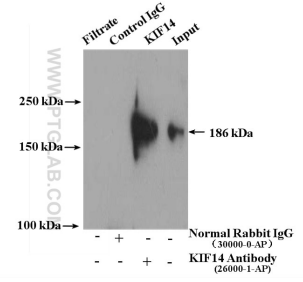
## Selected Validation Data



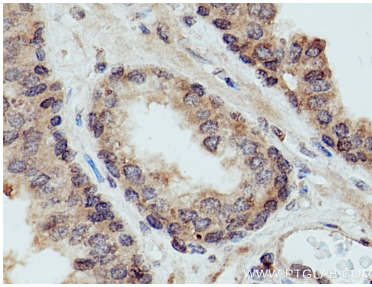
T-47D cells were subjected to SDS PAGE followed by western blot with 26000-1-AP (KIF14 antibody) at dilution of 1:300 incubated at room temperature for 1.5 hours.



Immunohistochemical analysis of paraffin-embedded human prostate cancer tissue slide using 26000-1-AP (KIF14 antibody) at dilution of 1:200 (under 10x lens). Heat mediated antigen retrieval with Tris-EDTA buffer (pH 9.0).



IP result of anti-KIF14 (IP:26000-1-AP, 4ug; Detection:26000-1-AP 1:300) with HEK-293T cells lysate 4000 ug.



Immunohistochemical analysis of paraffin-embedded human prostate cancer tissue slide using 26000-1-AP (KIF14 antibody) at dilution of 1:200 (under 40x lens). Heat mediated antigen retrieval with Tris-EDTA buffer (pH 9.0).