

For Research Use Only

# CHORDC1 Polyclonal antibody

Catalog Number: 25525-1-AP



## Basic Information

**Catalog Number:**

25525-1-AP

**Size:**

150ul, Concentration: 600 µg/ml by Nanodrop;

**Source:**

Rabbit

**Isotype:**

IgG

**Immunogen Catalog Number:**

AG18315

**GenBank Accession Number:**

BC072461

**GeneID (NCBI):**

26973

**UNIPROT ID:**

Q9UHD1

**Full Name:**

cysteine and histidine-rich domain (CHORD)-containing 1

**Calculated MW:**

332 aa, 37 kDa

**Observed MW:**

37 kDa

**Purification Method:**

Antigen affinity purification

**Recommended Dilutions:**

WB 1:1000-1:4000

IF/ICC 1:50-1:500

## Applications

**Tested Applications:**

WB, IF, ELISA

**Species Specificity:**

human

**Positive Controls:**

WB : HEK-293 cells, HeLa cells, K-562 cells

IF/ICC : HEK-293 cells,

## Storage

**Storage:**

Store at -20°C. Stable for one year after shipment.

**Storage Buffer:**

PBS with 0.02% sodium azide and 50% glycerol pH 7.3.

Aliquoting is unnecessary for -20°C storage

\*\*\* 20ul sizes contain 0.1% BSA

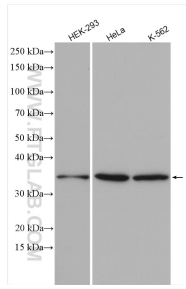
For technical support and original validation data for this product please contact:

T: 1 (888) 4PTGLAB (1-888-478-4522) (toll free in USA), or 1(312) 455-8498 (outside USA)

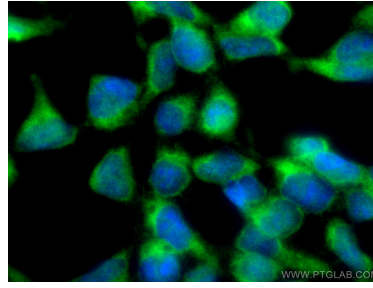
E: [proteintech@ptglab.com](mailto:proteintech@ptglab.com)  
W: [ptglab.com](http://ptglab.com)

This product is exclusively available under Proteintech Group brand and is not available to purchase from any other manufacturer.

## Selected Validation Data



Various lysates were subjected to SDS PAGE followed by western blot with 25525-1-AP (CHORDC1 antibody) at dilution of 1:2000 incubated at room temperature for 1.5 hours.



Immunofluorescent analysis of (-20°C Methanol) fixed HEK-293 cells using CHORDC1 antibody (25525-1-AP) at dilution of 1:200 and CoraLite®488-Conjugated AffiniPure Goat Anti-Rabbit IgG(H+L).