

For Research Use Only

SLC36A1 Polyclonal antibody

Catalog Number: 24775-1-AP

Featured Product

5 Publications



Basic Information

| | | |
|--|---|--|
| Catalog Number: 24775-1-AP | GenBank Accession Number: BC136437 | Purification Method: Antigen affinity purification |
| Size: 150ul , Concentration: 1000 ug/ml by Nanodrop; | GeneID (NCBI): 206358 | Recommended Dilutions: WB 1:500-1:1000 IHC 1:50-1:500 |
| Source: Rabbit | UNIPROT ID: Q7Z2H8 | |
| Isotype: IgG | Full Name: solute carrier family 36 (proton/amino acid symporter), member 1 | |
| Immunogen Catalog Number: AG20594 | Calculated MW: 476 aa, 53 kDa | |
| | Observed MW: 43-53 kDa | |

Applications

| | |
|---|--|
| Tested Applications: WB, IHC, ELISA | Positive Controls: WB : HeLa cells, IHC : human small intestine tissue, |
| Cited Applications: WB | |
| Species Specificity: human | |
| Cited Species: human, mouse | |

Note-IHC: suggested antigen retrieval with TE buffer pH 9.0; (*) Alternatively, antigen retrieval may be performed with citrate buffer pH 6.0

Notable Publications

| Author | Pubmed ID | Journal | Application |
|-----------|-----------|---------------------|-------------|
| Kai Lu | 31562534 | J Gastroenterol | WB |
| Suli Lv | 38599381 | J Biol Chem | WB |
| Ludi Wang | 38042221 | Free Radic Biol Med | WB |

Storage

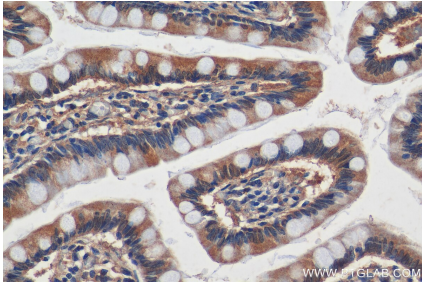
Storage:
Store at -20°C. Stable for one year after shipment.
Storage Buffer:
PBS with 0.02% sodium azide and 50% glycerol pH 7.3.
Aliquoting is unnecessary for -20°C storage

*** 20ul sizes contain 0.1% BSA

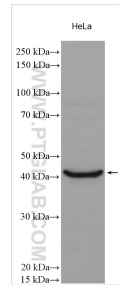
For technical support and original validation data for this product please contact:
T: 1 (888) 4PTGLAB (1-888-478-4522) (toll free in USA), or 1(312) 455-8498 (outside USA)
E: proteintech@ptglab.com
W: ptglab.com

This product is exclusively available under Proteintech Group brand and is not available to purchase from any other manufacturer.

Selected Validation Data



Immunohistochemical analysis of paraffin-embedded human small intestine tissue slide using 24775-1-AP (SLC36A1 antibody) at dilution of 1:200 (under 0x lens).



HeLa cells were subjected to SDS PAGE followed by western blot with 24775-1-AP (SLC36A1 antibody) at dilution of 1:600 incubated at room temperature for 1.5 hours.