

For Research Use Only

# AMOTL2 Polyclonal antibody

Catalog Number: 23351-1-AP

Featured Product

8 Publications



## Basic Information

<b>Catalog Number:</b> 23351-1-AP	<b>GenBank Accession Number:</b> BC011454	<b>Purification Method:</b> Antigen affinity purification
<b>Size:</b> 150ul , Concentration: 700 µg/ml by Nanodrop and 400 µg/ml by Bradford method using BSA as the standard;	<b>GeneID (NCBI):</b> 51421	<b>Recommended Dilutions:</b> WB 1:1000-1:6000
<b>Source:</b> Rabbit	<b>Full Name:</b> angiotenin like 2	
<b>Isotype:</b> IgG	<b>Calculated MW:</b> 779 aa, 86 kDa	
<b>Immunogen Catalog Number:</b> AG19953	<b>Observed MW:</b> 100 kDa	

## Applications

<b>Tested Applications:</b> WB, ELISA	<b>Positive Controls:</b> WB : HEK-293 cells,
<b>Cited Applications:</b> CoIP, IF, WB	
<b>Species Specificity:</b> human	
<b>Cited Species:</b> human	

## Background Information

Angiotenin-like 2 (AMOTL2) is a member of the motin family of angiotenin-binding proteins. The motin family, also known as AMOTs, consists of three members: AMOT, AMOT-like 1 (AMOTL1) and AMOTL2. Members of the motin family are a type of adaptor proteins mainly distributed in the cytomembrane, cytoplasm or nucleus, and have a higher expression in the endothelial cells of capillaries and in larger vessels of the placenta. Human AmotL2 encodes two isoforms of a molecular mass of 100 kDa and 60 kDa. (PMID: 34036399, PMID: 25080976)

## Notable Publications

Author	Pubmed ID	Journal	Application
Diala Kantar	33707576	Sci Rep	WB
Patrizia Brunner	31800378	Mol Biol Cell	WB
Zengya Guo	32942233	Mol Ther Nucleic Acids	WB

## Storage

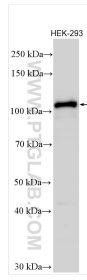
**Storage:**  
Store at -20°C. Stable for one year after shipment.  
**Storage Buffer:**  
PBS with 0.02% sodium azide and 50% glycerol pH 7.3.  
Aliquoting is unnecessary for -20°C storage

\*\*\* 20ul sizes contain 0.1% BSA

For technical support and original validation data for this product please contact:  
T: 1 (888) 4PTGLAB (1-888-478-4522) (toll free in USA), or 1(312) 455-8498 (outside USA)  
E: proteintech@ptglab.com  
W: ptglab.com

This product is exclusively available under Proteintech Group brand and is not available to purchase from any other manufacturer.

## Selected Validation Data



HEK-293 cells lysates were subjected to SDS PAGE followed by western blot with 23351-1-AP (AMOTL2 antibody) at dilution of 1:3000 incubated at room temperature for 1.5 hours.